

OmegaFlex®

Commercial Solutions



TracPipe®CounterStrike®

DoubleTrac™

MediTrac®

TracPipe PS-II®

Supplying Quality Engineered Flexible Metal Piping Products

For Industrial, Commercial, and Residential Applications Since 1975

OmegaFlex's flexible corrugated metal gas piping systems are available in long continuous lengths which can be bent without the need for a fitting. This can mean less labor is required to install these products, plus fewer fittings means fewer potential leak points over rigid piping systems.

omegaflex.com

For more information, see back cover.



tracpipe.com



TracPipe® CounterStrike®

Flexible Gas Piping by OmegaFlex®

TracPipe® CounterStrike® Piping System for LP and Natural Gas

The most cost-effective and installer friendly gas piping system in use today.

Unlike steel piping, CounterStrike CSST is lightweight and requires minimum pipe supports and eliminates the any requirements for expensive seismic restraints and supports common in commercial construction.

CSST remains the most cost-effective means for repairing existing piping systems (regardless of the material) as well as installing new gas piping into existing buildings to convert appliances and/or to add new gas load. Available in in 3/8" to 2" diameters in lengths up to 500 feet long.



doubletrac.net



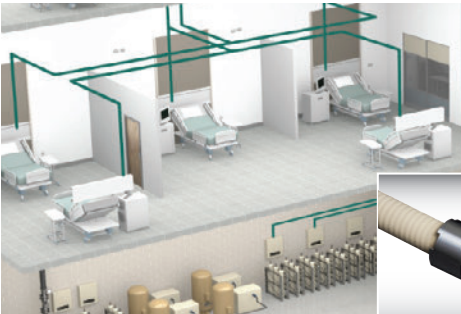
DoubleTrac®

Easy Installation. Zero Permeation.

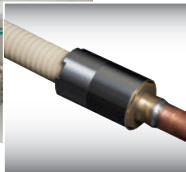
DoubleTrac® for Diesel, Gasoline and Biofuels

The most cost-effective petroleum piping solution available - easy to install with zero permeation.

Continuous double containment pipe with 316L Stainless Steel primary and EFEP secondary jacket. 30 year warranty on pipe and fittings for USTs with or without chase pipe - 15 year warranty on pipe and fittings for ASTs The only underground pipe to pass 2 hour fire test. Available sizes 1", 1.5" and 2" diameters in lengths up to 1000 feet long. This allows for as few as two joints which minimizes potential leak problems.



meditrac.us



MediTrac®

Flexible Medical Gas Piping by OmegaFlex®

MediTrac® Corrugated Medical Gas Tubing for Healthcare Use

CMT represents the next generation of copper tubing for medical gas distribution.

Unlike traditional copper tubing used for medical gas distribution, MediTrac installs quickly with one continuous length from the gas source to a terminal device. Jacketed with a fire-retardant polymer, sized 1/2" to 2", safe and bendable, MediTrac proves ideal for any new, renovated or retrofitted medical, dental, clinic or care facility.

Designed to last the lifetime of a facility and sized 1/2" to 2", MediTrac can be used with all K, L and DWV medical tubing for a full array of medical gases.



tracpipe.com



TracPipe® PS-II

Polyethylene-Sleeved Flexible Gas Piping by OmegaFlex®

TracPipe PS-II for Underground LP and Natural Gas Piping Applications

Proven in the field over the last decade, PS-II is perfect for gas installations in a variety of applications where speed, reliability and safety are paramount.

Constructed from corrugated stainless steel which is sleeved in a polyethylene sleeve that acts as a vented containment system for added safety. Extremely resistant to damage, easy to handle with quick attachment fittings. Available in diameters from 3/8" to 2" and in lengths up to 250 feet long.

Installs in long lengths without joints. Installation in a fraction of the time of black iron pipe for significant labor savings.

To view OmegaFlex's entire product line, visit omegaflex.com

For more information on CounterStrike and TracPipe PS-II call 1-800-671-8622

For MediTrac and DoubleTrac call 1-800-355-1039

© Omega Flex, Inc. 2020

OmegaFlex®

OmegaFlex, Inc.

451 Creamery Way • Exton, PA 19341

ISO 9001 Registered Company

OF-003 01/2020