

ASSEMBLY of TracPipe® System Recessed Fire Rated Metal Gas Outlet Wall Box with Floppy Conduit Adapter

Product Description

1. The **TracPipe** System Gas Outlet Wall Box has been tested and approved for 1-hr. and 2-hr. Fire Stop Systems in accordance with UL 1479.
2. The Wall Box installation is zero clearance for a finished appearance in laundry rooms, kitchens, mechanical rooms, and provides a ridged attachment point for appliance connectors serving movable appliances.

CAUTION

This box is not suitable for use with black iron pipe or any CSST brand other than TracPipe System.

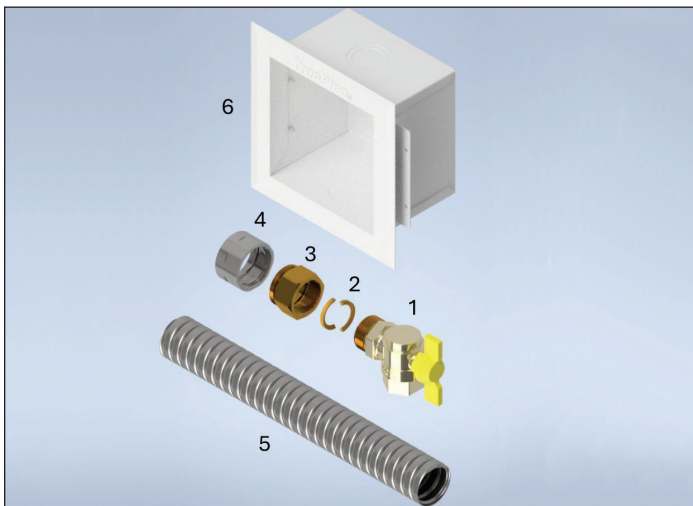
NOTICE:

Mounting tabs are oriented for a single layer of drywall. When two layers are used for some 2-HR rated walls, remove screws on tabs and invert mounting tabs.

1. FGP-AF-WB-SIZE (Metal Wall Box Fitting Assembly)

Components

1. 90-Degree Ball Valve
2. Split Rings
3. Nut
4. Floppy Conduit Adapter
5. Floppy Conduit (1' section)
6. Metal Wall Box w/ Cover & Mounting Tabs



CAUTION

For your personal safety, the knife blade and cut tube ends are both very sharp. Use care when cutting the jacket and handling the tube.

2. CUT-TO-LENGTH

Determine proper length plus approximately three inches. Make a rough cut through the outer jacket and stainless-steel tubing, using a tubing cutter with a sharp cutting wheel. Use full circular strokes in one direction and tighten roller pressure slightly (quarter turn) after each revolution. **DO NOT OVER TIGHTEN ROLLER**, which may flatten the tubing.

NOTICE:

A reciprocating saw can be used when rough cutting all sizes of tubing to length; however, the **FINAL CUT** must be performed using a suitable tubing cutter with a sharp cutting wheel.

CAUTION

The use of a small cutting wheel may flatten the first corrugation and make cutting and/or sealing fittings difficult.

3. STRIP JACKET & FINAL CUT

Using a sharp utility knife, strip back the jacket three inches. From the edge of the jacket, count out the required number of corrugations in Table 1. Make a final cut on the bare stainless in the valley between the corrugations. **DO NOT** overtighten roller which may flatten the first corrugation (Figure 1-1, Figure 1-2, Figure 1-3).

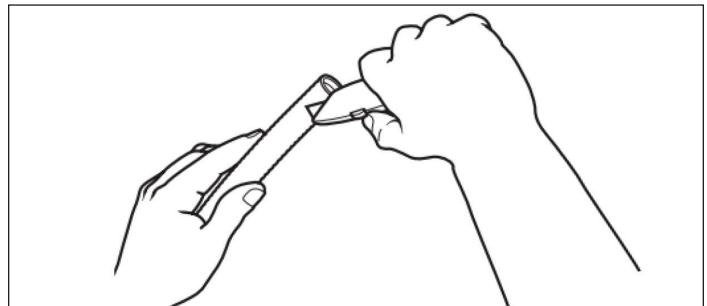


Figure: 1-1

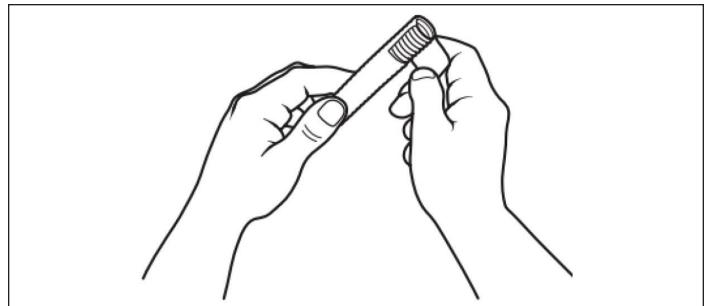


Figure: 1-2

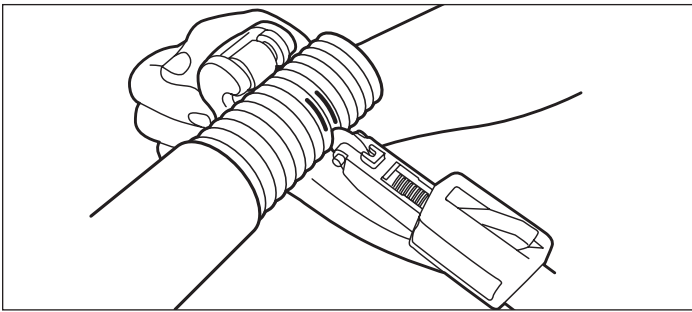


Figure: 1-3

CAUTION

To separate the two cut tubing ends, gently bend the faces of the tubing back and forth against each other. Do not twist or pull the tubing to break it loose. This may cause an improper seal.

Table 1
Final Cut Corrugation Count

TracPipe System Pipe Size	Final Corrugation Count	Cut Between Corrugations
3/8"	9	9 & 10
1/2"	8	8 & 9
3/4"	8	8 & 9

4. Remove Cover from the Metal Wall Box and Floppy Conduit Adapter from the Nut (Figure 1-4).

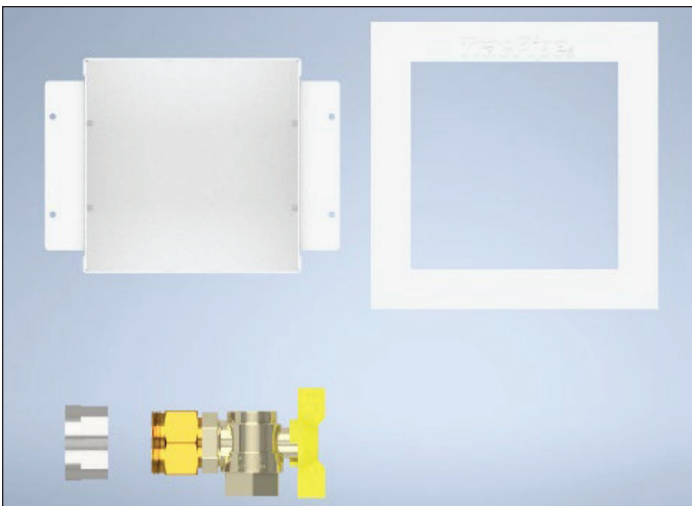


Figure: 1-4

5. Remove knockout for the appropriate size valve assembly. The 1/2" size uses the single knockout. The 3/8" and 3/4" knockouts are stacked. Place the Floppy Conduit and Floppy Conduit Adapter over the final cut tubing and feed the tubing through the knockout hole (Figure 1-5).



Figure: 1-5

6. Separate the 90-Degree Ball Valve from the Nut and remove the two Split Rings. Slide the Nut over the cut end until the Nut bottoms out against the jacket. Place two Split Rings into the first corrugation next to the tube cut then slide the Nut forward to trap the Split Rings (Figure 1-6).

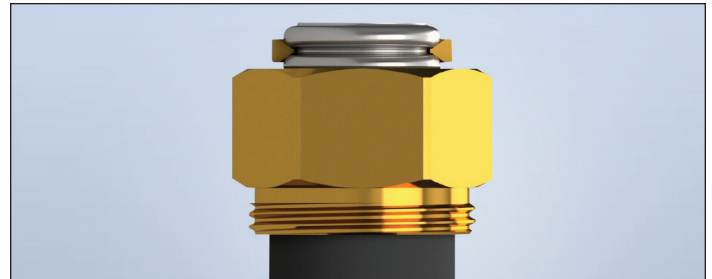


Figure: 1-6

7. Thread the 90-Degree Ball Valve into the Nut. Tighten the **TracPipe** System fitting to the torque values listed in Table 2, ensuring that the valve outlet faces forward when finished tightening. Note that **TracPipe** System fitting is designed to form a leak tight seal on the stainless steel tubing as the fitting is tightened. (Figure 1-7).

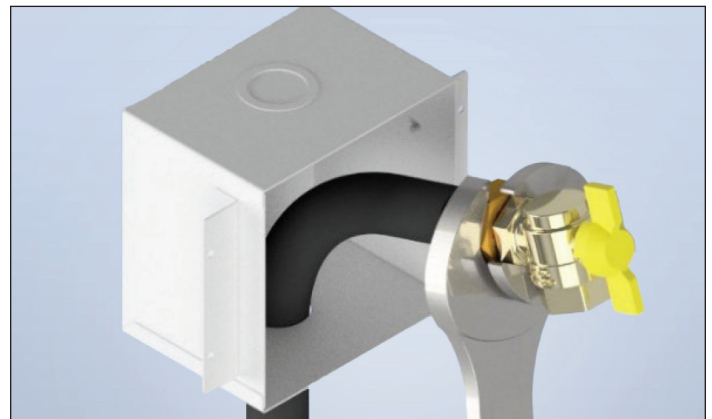


Figure: 1-7

⚠ CAUTION

Do not use any pipe dope or thread sealants on the self-flaring connection. This connection is a metal to metal seat and will not seal properly if pipe dope or thread sealants are used. Sealants are to be used on the NPT connector to the equipment only.

**Table 2
TracPipe System Torque Values**

TracPipe System Pipe Size	Nut Wrench Flat Size	Torque Range
3/8"	1-1/8"	35-50 FT-LBS
1/2"	1-1/4"	42-70 FT-LBS
3/4"	1-1/2"	45-110 FT-LBS

8. Slide Metal Wall Box up and over the male threads of the Nut. Mount the Metal Wall Box firmly to the stud. Provide full support by fastening both mounting tabs to the structure when required by local codes. Thread and tighten the Floppy Conduit Adapter onto the Nut to secure the valve assembly to the Metal Wall Box (Figure 1-8).

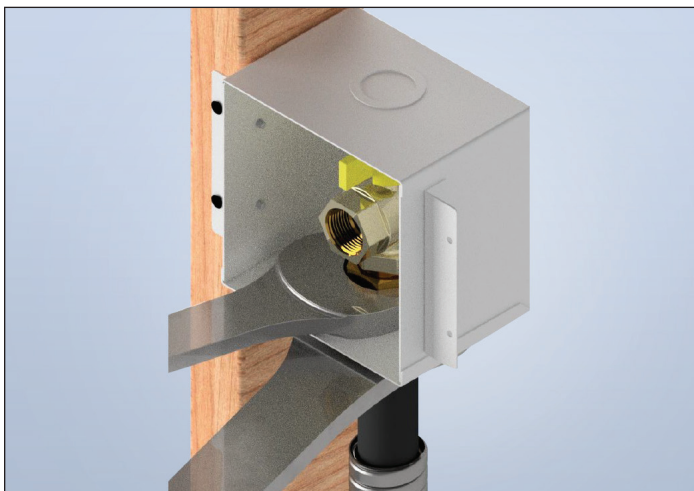


Figure: 1-8

9. Slide up and thread Floppy Conduit into Floppy Conduit Adapter. **No additional fastening or adhesives required!**
10. Pressure test **TracPipe** System pipe and fitting in accordance with state & local codes and Section 6 of the **TracPipe** System Flexible Gas Piping Design Guide & Installation Instructions.
11. Install Cover after completion of drywall. No fire caulk is required if the gap between the edges of the box and the drywall is less than 1/4" (Figure 1-9).



Figure: 1-9

Refer to the following QR code to access assembly videos and instructions for other products.



OmegaFlex®

451 Creamery Way, Exton, PA 19341-2509

800-355-1039 • Fax: 610-524-6484

www.omegaflex.com

ISO 9001 Registered Company