

ASSEMBLY of TracPipe® System Key Valve Bracket Fitting w/ Floppy Conduit Adapter

1. FGP-AF-KB-SIZE

(Key Valve Bracket Fitting Assembly)
Components

- 1. Body
- 2. Split Rings
- 3. Nut
- 4. Floppy Conduit Adapter
- 5. Key Valve Bracket
- 6. Floppy Conduit (1' Length)



⚠ CAUTION

For your personal safety, the knife blade and cut tube ends are both very sharp. Use care when cutting the jacket and handling the tube.

2. CUT-TO-LENGTH

Determine proper length plus approximately three inches. Make a rough cut through the outer jacket and stainless-steel tubing, using a tubing cutter with a sharp cutting wheel. Use full circular strokes in one direction and tighten roller pressure slightly after each revolution. **DO NOT OVER TIGHTEN ROLLER**, which may flatten the tubing.

NOTICE:

A reciprocating saw can be used when rough cutting all sizes of tubing to length; however, the FINAL CUT must be performed using a suitable tubing cutter with a sharp cutting wheel.

⚠ CAUTION

The use of a small cutting wheel may flatten the first corrugation and make cutting and/or sealing fittings difficult.

3. STRIP JACKET & FINAL CUT

Using a sharp utility knife, strip back the jacket three inches. From the edge of the jacket, count out the required number of full corrugations in Table 1. Make a final cut on the bare stainless in the valley between the corrugations. **DO NOT** overtighten roller which may flatten the first corrugation (Figure 1-1, Figure 1-2, Figure 1-3).

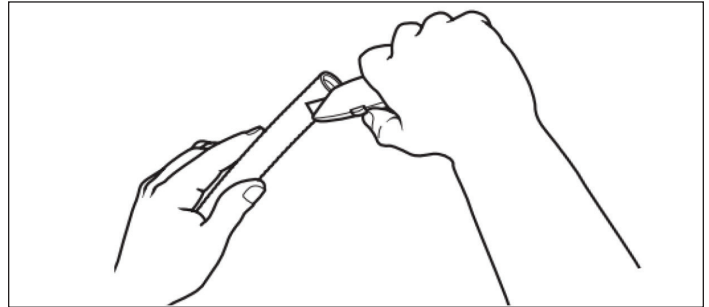


Figure: 1-1

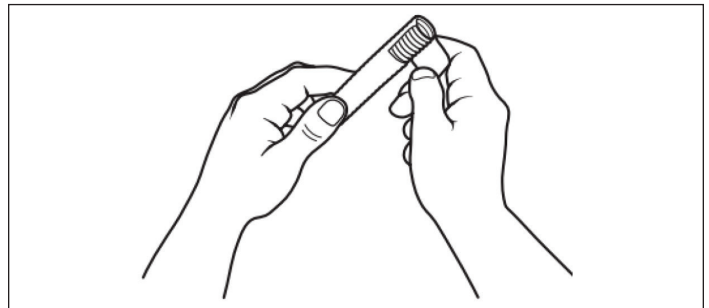


Figure: 1-2

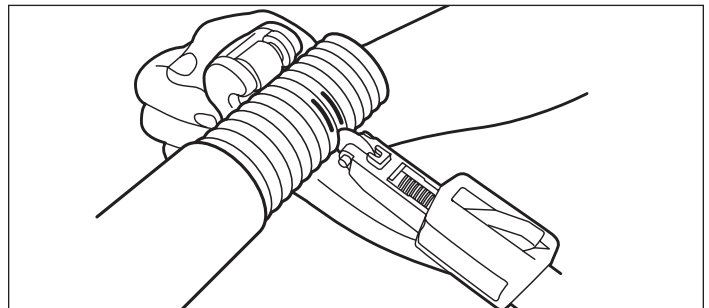


Figure: 1-3

⚠ CAUTION

To separate the two cut tubing ends, gently bend the faces of the tubing back and forth against each other. **Do not twist or pull the tubing to break it loose. This may cause an improper seal.**

Table 1
 Final Cut Corrugation Count

TracPipe System Pipe Size	Final Corrugation Count	Cut Between Corrugations
3/8"	9	9 & 10
1/2"	8	8 & 9
3/4"	8	8 & 9

4. Mount the Key Valve Bracket firmly to the inside of the stud at the desired location. Provide full support by utilizing all (4) screw holes (Figure 1-4).



Figure: 1-4

5. Remove the Floppy Conduit from the Nut. Place the Floppy Conduit and Floppy Conduit Adapter over the final cut tubing and feed the tubing through the Key Valve Bracket (Figure 1-5).

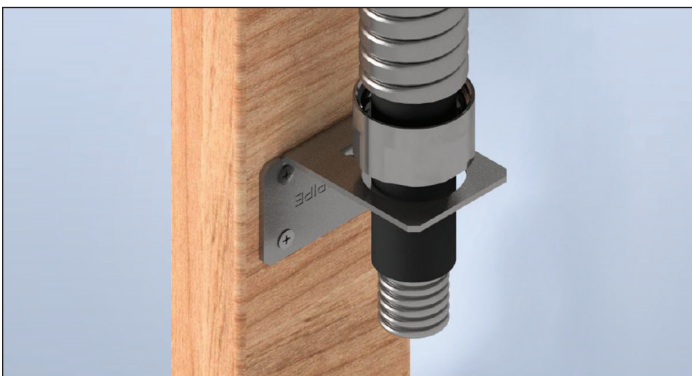


Figure: 1-5

6. Separate the fitting Body from the Nut and remove the two Split Rings. Slide the Nut over the cut end until the Nut bottoms out against the jacket. Place two Split Rings into the first corrugation next to the tube cut then slide the Nut forward to trap the Split Rings (Figure 1-6).

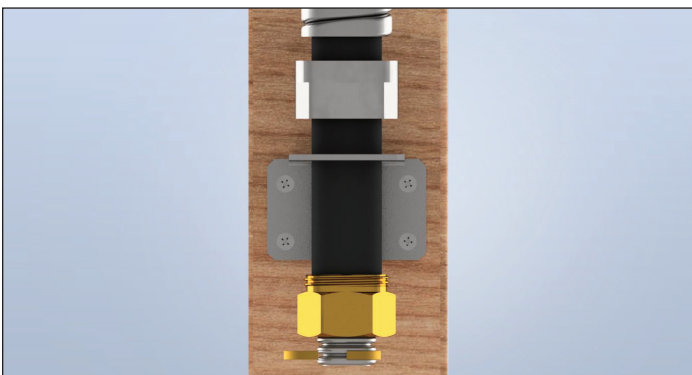


Figure: 1-6

7. Thread the Body into the Nut to engage the threads. Using appropriate wrenches, tighten the fitting to the torque values listed in Table 2. Note that **TracPipe** System fitting is designed to form a leak tight seal on the stainless-steel tubing as the fitting is tightened (Figure 1-7). When fully tightened, there should be no threads visible between the Nut and Body.

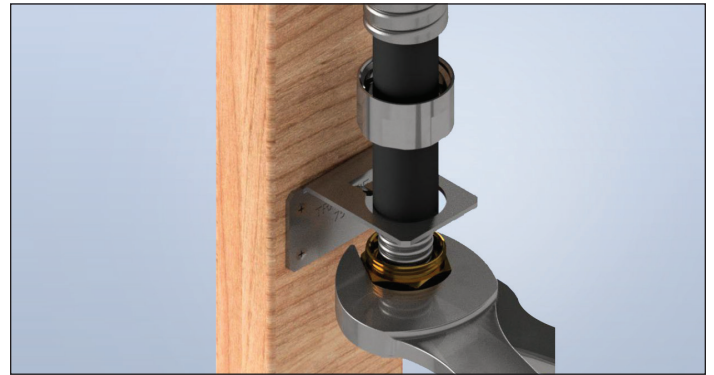


Figure: 1-7

⚠ CAUTION

Do not use any pipe dope or thread sealants on the self-flaring connection. This connection is a metal to metal seat and will not seal properly if pipe dope or thread sealants are used. Sealants are to be used on the NPT connector to the equipment only.

**Table 2
TracPipe System Torque Values**

TracPipe System Pipe Size	Nut Wrench Flat Size	Torque Range
3/8"	1-1/8"	35-50 FT-LBS
1/2"	1-1/4"	42-70 FT-LBS
3/4"	1-1/2"	45-110 FT-LBS

8. Slide the Nut against the Key Valve Bracket ensuring one hex flat of the Nut is resting against the hex ledge of the Key Valve Bracket. Thread and tighten the Floppy Conduit Adapter onto the Nut to secure the assembly to the Key Valve Bracket (Figure 1-8).

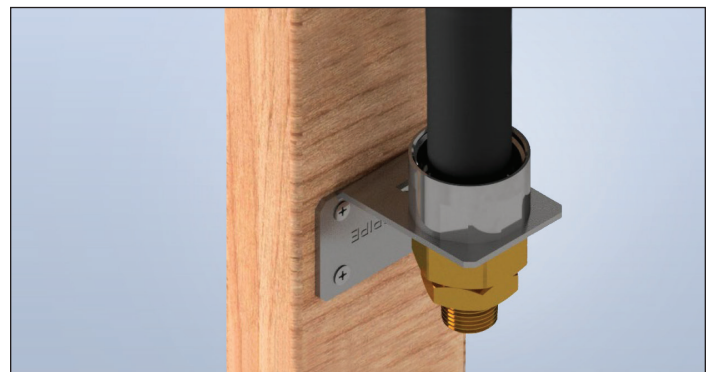


Figure: 1-8

9. Slide down and thread Floppy Conduit into Floppy Conduit Adapter (Figure 1-9). **No additional fastening or adhesives required!**

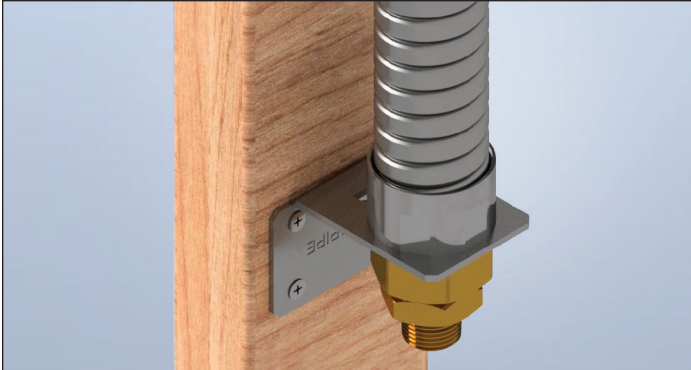


Figure: 1-9

NOTICE:

If a key valve is being used (Figure 1-10), the bracket may need to be mounted to the stud after threading the valve onto the fitting to provide enough clearance for installation.

10. Pressure test **TracPipe** System pipe and fitting in accordance with state & local codes and Section 6 of the **TracPipe** System Flexible Gas Piping Design Guide & Installation Instructions.

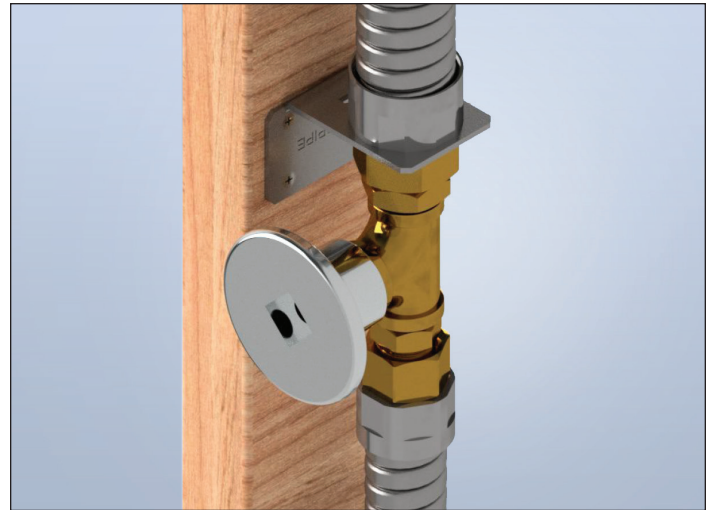


Figure: 1-10

NOTICE:

The outlet to fireplace connection can be completed using **TracPipe** System piping with fittings or ridged piping.

NOTICE:

Omega Flex does NOT provide fireplace key valves.

Refer to the following QR code to access assembly videos and instructions for other products.



OmegaFlex®

451 Creamery Way, Exton, PA 19341-2509

800-355-1039 • Fax: 610-524-6484

www.omegaflex.com

ISO 9001 Registered Company