

TracPipe® **CounterStrike**®

Flexible Gas Piping by OmegaFlex®



PRODUCT CATALOG

Flexible Gas Piping Systems for Commercial, Industrial and Residential

Table of Contents

CounterStrike® Introduction	3
Flexible Gas Tubing	4
AutoFlare® Fittings and Accessories	5
AutoFlare® Tee Fittings.....	6
CounterStrike® Accessories	8
TracPipe® PS II Underground Gas Piping	10
Warranty.....	11

TracPipe®  **CounterStrike®**
Flexible Gas Piping by OmegaFlex®

Improve your bottom line by taking advantage of TracPipe® CounterStrike® industry-leading flow capacities.

CONTACT INFORMATION

CounterStrike® • 1.800.671.8622

sales@tracpipe.com • www.tracpipe.com

OmegaFlex, TracPipe, CounterStrike and AutoFlare are registered trademarks of OmegaFlex, Inc.

Four Decades of Performance

Since 1975, Omega Flex, Inc. has led the piping industry with its high-quality construction and commitment to exceed the industry's product and safety standards.

- With over 100 patents, OmegaFlex's philosophy is not to wait for mandates, but to lead the industry by introducing the best products.
- In 1999, OmegaFlex was the first CSST manufacturer to mandate the bonding of its yellow-jacketed TracPipe® Corrugated Stainless Steel Tubing (CSST) in its installation guide.
- In 2004, OmegaFlex developed CounterStrike® CSST, which contains all of the innovative features of TracPipe® CSST plus a built-in arc resistant jacket that eliminates the need for additional bonding. Subject to applicable local codes.
- In 2011, OmegaFlex became the only CSST manufacturer to transition from its highly successful yellow CSST product "TracPipe®" CSST and now only sells its innovative black-jacket product "CounterStrike®" CSST throughout the US market.
- In 2012, OmegaFlex was a sponsor of NSF-UC San Diego's earthquake testing program. The flexibility of CounterStrike® CSST withstood the worst seismic activity simulated without any failures, leaks or damage. Meanwhile black iron pipe, which was installed next to CounterStrike® CSST, fractured in the same test.

CounterStrike® CSST is also :

- Listed by both CSA and ICC Evaluation-Services-PMG 1058 and evaluated by the International Association of Plumbing and Mechanical Officials (IAPMO) ER 0227 for lightning resistance without additional bonding (unless required by local codes).
- Compliant with fuel gas codes in all 50 states.
- Compliant with all model codes, including all the National Fuel Gas Code (NFPA), International Fuel Gas Code and International Residential Code (ICC), and the Uniform Plumbing Code (IAPMO).
- Listed to the national consensus standard for CSST (ANSI LC 1-2016) including all requirements for arc-resistant conductive jackets.
- Underwriters Laboratories (UL) listed for 1, 2 and 4 hour through penetration fire stop systems without removal of the conductive jacket.
- This catalog is not for use in Canada.
- The 2022 ICC-ES ESR-4565 listing represents the seismic certification by shake-table testing for CounterStrike® CSST flexible gas piping systems as an alternative to code-prescribed requirements. Omega Flex tubing systems sustained severe earthquake simulations that surpassed all the intensities and seismic forces ever recorded as well as the design forces specified in the current building codes. The ICC seismic certifications for the three Omega Flex products (CounterStrike®, MediTrac®, and DoubleTrac®) are consistent with the technical requirements of the major US seismic codes and standards including: International Building Code, the ASCE-7 Standard, FEMA 461 as well as the City of Los Angeles Department of Building Safety, and the State of California Division of State Architect and OSHPD.



CounterStrike® CSST in seismic test rig.


Flexible Gas Piping CSST

CounterStrike® CSST Piping Systems for Natural Gas and Propane

The flexibility and long lengths of CounterStrike® CSST make it perfect for remodel/repair work. It can be pulled like wire, which minimizes the need to remove and replace walls, while at the same time potentially reducing both construction cost and shortening lead times.

CounterStrike® features a single robust protective jacket over a non-annealed CSST, which offers enhanced crush resistance. The superior crush resistance of CounterStrike® CSST means that it lays straighter, is simpler to cut and pulls easier in new home construction.

CounterStrike® Flexible Gas Tubing


 <p>Corrugated Stainless Steel 300 Series with Black Conductive Jacket Plywood Reels for Packaging</p>	Description	Part Number	Size	Reel Length	Lb/Reel
	CounterStrike 3/8"	FGP-CS-375-250	3/8"	250 ft/reel	37
	CounterStrike 3/8"	FGP-CS-375-100	3/8"	100 ft/reel	17
	CounterStrike 1/2"	FGP-CS-500-500	1/2"	500 ft/reel	98
	CounterStrike 1/2"	FGP-CS-500-250	1/2"	250 ft/reel	52
	CounterStrike 1/2"	FGP-CS-500-100	1/2"	100 ft/reel	24
	CounterStrike 3/4"	FGP-CS-750-250	3/4"	250 ft/reel	70
	CounterStrike 3/4"	FGP-CS-750-100	3/4"	100 ft/reel	31
	CounterStrike 1"	FGP-CS-100-180	1"	180 ft/reel	70
	CounterStrike 1"	FGP-CS-100-100	1"	100 ft/reel	40
	CounterStrike 1 1/4"	FGP-CS-125-250	1 1/4"	250 ft/reel	129
	CounterStrike 1 1/4"	FGP-CS-125-150	1 1/4"	150 ft/reel	78
	CounterStrike 1 1/2"	FGP-CS-150-250	1 1/2"	250 ft/reel	182
	CounterStrike 1 1/2"	FGP-CS-150-150	1 1/2"	150 ft/reel	103
CounterStrike 2"	FGP-CS-200-150	2"	150 ft/reel	137	

Note: Other lengths available. Consult factory for price and lead time.

CounterStrike® CSST Coils

CounterStrike® CSST tubing coil gas piping system comes in 1/2", 3/4", and 1" diameters. Used for natural gas or propane powered appliances the smaller coils are perfect for smaller jobs involving the replacement or relocation of a single gas appliance.

CounterStrike® Flexible Gas Tubing Coil





	Description	Part Number	Size	Coil Length	Lb/Coil
	CounterStrike 1/2"	FGP-CS-500-50	1/2"	50 ft	9.4
	CounterStrike 1/2"	FGP-CS-500-25	1/2"	25 ft	4.6
	CounterStrike 3/4"	FGP-CS-750-50	3/4"	50 ft	12.4
	CounterStrike 3/4"	FGP-CS-750-25	3/4"	25 ft	6.3
	CounterStrike 1"	FGP-CS-100-50	1"	50 ft	16.8
	CounterStrike 1"	FGP-CS-100-25	1"	25 ft	8.6

AutoFlare® Fittings and Accessories

Self-Flaring Fitting

AutoFlare® is the self-piloting fitting that attaches TracPipe® CounterStrike® to traditional gas fittings and appliances. No special tools or additional parts required.



AutoFlare® Fittings and Accessories

		Description	Part Number	Size	Pkg. Qty	Lb.
Straight Mechanical Fitting Brass		AutoFlare Straight 3/8"	FGP-FST-375N	3/8"(3/8"NPT)	24/box	.3
		AutoFlare Straight 3/8"	FGP-FST-375	3/8"(1/2"NPT)	24/box	.4
		AutoFlare Straight 1/2"	FGP-FST-500	1/2"	24/box	.4
Reducing Fitting Brass		AutoFlare Reducing 1/2"	FGP-RST500-750	1/2"-3/4"NPT	24/box	.4
		AutoFlare Straight 3/4"	FGP-FST-750	3/4"	16/box	.5
		AutoFlare Reducing 3/4"	FGP-RST750-500	3/4"-1/2"NPT	16/box	.5
		AutoFlare Straight 1"	FGP-FST-1000	1"	16/box	.7
Fitting Sizes 1/4", 1 1/2" and 2" are sold individually	}	AutoFlare Reducing 1"	FGP-RST1000-750	1"-3/4"NPT	16/box	.7
		AutoFlare Straight 1 1/4"	FGP-FST-1250	1 1/4"	6/box	1.5
		AutoFlare Straight 1 1/2"	FGP-FST-1500	1 1/2"	4/box	2.1
Split Rings Brass		AutoFlare Straight 2"	FGP-FST-2000	2"	4/box	3.5
		Spare Split Rings	FGP-RING-375	3/8"	10/pack	.06
		Spare Split Rings	FGP-RING-500	1/2"	10/pack	.06
		Spare Split Rings	FGP-RING-750	3/4"	10/pack	.06
		Spare Split Rings	FGP-RING-1000	1"	10/pack	.06
		Spare Split Rings	FGP-RING-1250	1 1/4"	4/pack	.06
		Spare Split Rings	FGP-RING-1500	1 1/2"	4/pack	.2
Female Straight Fitting Brass		Spare Split Rings	FGP-RING-2000	2"	4/pack	.3
		AutoFlare Female Straight 3/8"	FGP-FSTF-375	3/8"-1/2"NPT	24/box	.25
		AutoFlare Female Straight 1/2"	FGP-FSTF-500	1/2"	24/box	.33
		AutoFlare Female Straight 3/4"	FGP-FSTF-750	3/4"	16/box	.49
		AutoFlare Female Straight 1"	FGP-FSTF-1000	1"	16/box	.61

AutoFlare® Fittings and Accessories					
	Description	Part Number	Size	Pkg. Qty	Lb.
Coupling Insert Brass	Coupling 3/8"	FGP-CPLG-375	3/8"	24/box	.3
	Coupling 1/2"	FGP-CPLG-500	1/2"	24/box	.5
	Coupling 3/4"	FGP-CPLG-750	3/4"	16/box	.7
	Coupling 1"	FGP-CPLG-1000	1"	16/box	.9
Flange Mount Fittings Steel	Coupling 1 1/4"	FGP-CPLG-1250	1 1/4"	6/box	2.0
	Coupling 1 1/2"	FGP-CPLG-1500	1 1/2"	4/box	3.3
	Coupling 2"	FGP-CPLG-2000	2"	4/box	5.5
	<i>AutoFlare</i> Steel Flange Fitting 3/8"	FGP-RFG-375	3/8"	12/box	.61
	<i>AutoFlare</i> Steel Flange Fitting 1/2"	FGP-RFG-500	1/2"	12/box	.6
Flange Mount Fittings Steel	<i>AutoFlare</i> Steel Flange Fitting 3/4"	FGP-RFG-750	3/4"	8/box	.74
	<i>AutoFlare</i> Steel Flange Fitting 1"	FGP-RFG-1000	1"	8/box	.92
	<i>AutoFlare</i> Steel Flange Fitting 1 1/4"	FGP-RFG-1250	1 1/4"	4/box	1.53
	<i>AutoFlare</i> Flange L Bracket	FGP-TERM-BRAC	All	1 each	.3
	90° Flange Fitting 1/2"	FGP-ELS-500	1/2"	8/box	.7
	90° Flange Valve 3/8"	FGP-RF90V-375	3/8"	6/box	1.02
	90° Flange Valve 1/2"	FGP-RF90V-500	1/2"	6/box	.90
	90° Flange Fitting 3/4"	FGP-RF90V-750	3/4"	6/box	1.4

AutoFlare® Tee Fittings					
	Description	Part Number	Size	Pkg. Qty	Lb.
Tee Fitting Brass	<i>CounterStrike by NPT</i>				
	Tee - Male 3/4"	FGP-T500-750	1/2-3/4" male	12/box	1
	Tee - Female 1/2"	FGP-T500-500	1/2" Female	14/box	1
	Tee - Female 1/2"	FGP-T750-500	3/4-1/2" Female	12/box	1.6
	Tee - Female 3/4"	FGP-T750-750	3/4" Female	12/box	1.6
	Tee - Female 1"	FGP-T1000-1000	1" Female	10/box	2.2
Tee Fitting Brass	<i>CounterStrike / All Outlets</i>				
	Tee - All Outlets 1/2"	FGP-TF500-T500	1/2 x 1/2"	14/box	1
	Tee - All Outlets 3/4"	FGP-TF750-T750	3/4 x 3/4"	12/box	1.6
	Tee - All Outlets 1"	FGP-TF1000T1000	1 x 1"	10/box	2.2
Reducer Tee Fitting Brass	Tee-Reducer	FGP-RT-501	1/2" x 3/8" x 3/8"	14/box	0.9
	Tee-Reducer	FGP-RT-751	3/4" x 1/2" x 3/8"	12/box	1.1
	Tee-Reducer	FGP-RT-752	3/4" x 1/2" x 1/2"	12/box	1.1
	Tee-Reducer	FGP-RT-1001	1" x 3/4" x 1/2"	10/box	1.8
	Tee-Reducer	FGP-RT-1002	1" x 3/4" x 3/4"	10/box	1.8
	Tee-Reducer	FGP-TF750-T500	3/4" x 3/4" x 1/2"	12/box	1.6
	Tee-Reducer	FGP-TF1000-T750	1" x 1" x 3/4"	10/box	2.1
	Tee-Reducer	FGP-TF1000-T500	1" x 1" x 1/2"	10/box	2.2

AutoFlare® Fittings and Accessories

	Description	Part Number	Size	Pkg. Qty	Lb.	
<p>Brackets and Stub-outs</p> 	Key Valve Bracket	FGP-KVB-375	3/8"	18/box	.50	
	Key Valve Bracket	FGP-KVB-500	1/2"	18/box	.54	
	Key Valve Bracket - Reducing	FGP-KVB750-500	3/4" x 1/2"	18/box	.77	
	1/2" x 6" Meter Term Stub-Out	FGP-1/2X6MT	1/2" x 6"	20/box	1.10	
	3/4" x 6" Meter Term Stub-Out	FGP-3/4X6MT	3/4" x 6"	20/box	1.20	
	1" x 6" Meter Term Stub-out	FGP-1X6 MT	1" x 6"	20/box	1.36	
	1-1/4" x 6" Meter Term Stub-out	FGP-1-1/4X6MT	1-1/4" x 6"	20/box	1.62	
	1/2" x 12" Meter Term Stub-out	FGP-1/2X12MT	1/2" x 12"	15/box	1.58	
	3/4" x 12" Meter Term Stub-out	FGP-3/4X12MT	3/4" x 6"	15/box	1.80	
	1" x 12" Meter Term Stub-out	FGP-1X12 MT	1" x 12"	15/box	1.36	
	1-1/4" x 12" Meter Term Stub-out	FGP-1-1/4X12 MT	1-1/4" x 12"	15/box	2.78	
	<p>Meter Termination Bracket</p> <p>Wallbox with Valve Note: Wallbox measures 7" x 7" x 3"</p> 	Meter Stud Bracket	FGP-STUD-BRAC	all	8/box	2.1
		Appliance Stub-out	FGP-ASP-500	1/2" x 2"	25/box	.72
		Fireplace Stub-out	FGP-FPT-500	1/2"	25/box	.72
1/2" x 90° Stub Out		FGP-ASP90S-500	1/2" x 5" x 5"	25/box	1	
3/4" x 90° Stub Out		FGP-ASP90S-750	3/4" x 5" x 5"	15/pack	1.3	
Meter Termination Bracket		FGP-MT-BRAC	1"	1 each	.8	
AutoFlare Metal Wallbox w/Valve		FGP-WBTM-375	3/8"	24/box	2.3	
AutoFlare Metal Wallbox w/Valve		FGP-WBTM-500	1/2"	24/box	2.3	
AutoFlare Metal Wallbox w/Valve		FGP-WBTM-750	3/4"	24/box	2.8	

CounterStrike® Accessories

Multi-port Manifolds
Coated Malleable Iron

Stackable Manifolds
Coated Malleable Iron

Manifold Bracket
Galvanized Steel

Gas Load Center
Painted Steel



Gas Load Center w/Manifold Bracket
For use with FGP-MI-PC only

Bonding Clamp
Brass



Coated Manifold
4 ports 1/2" female



2 ports 1/2" female
1/2" female to 1/2" male



Manifold Bracket
For use with FGP-MI-PC only



2 ports 1/2" female
3/4" female to 3/4" male



4 ports 3/4" female
inlets 1-1/4" and 1" female



Large Manifolds
4 ports 1" female



Stackable Manifold
Bracket



Description	Part Number	Size	Pkg. Qty	Lb.
Coated Manifold	FGP-MI-PC	3/4" x 1/2" x 1/2"(4)	1 each	1.9
Manifold Bracket	FGP-MB2	----	1 each	1.3
Stackable Manifold	FGP-MI-ST-500	1/2"F - M X 1/2"(2)	1 each	1.4
Stackable Manifold	FGP-MI-ST-750	3/4"F - M X 1/2"(2)	1 each	1.4
Stackable Manifold Bracket	FGP-MB-ST	fits MI-ST	1 each	.4
Load Center w/Bracket	FGP-LC	----	1 each	11.3
Large Coated Manifold	FGP-MI-PC-1X	1 1/4" x 1" x 3/4"(4)	1 each	5.5
Large Coated Manifold	FGP-MI-PC-2X	2" x 1 1/2" x 1"(4)	1 each	13.0
Bonding Clamp	FGP-GC-1	3/8", 1/2" (TP/CS)	1/2", 3/4", 1" (Iron pipe)	1 each
Bonding Clamp	FGP-GC-2	3/4", 1", 1 1/4" (TP/CS)	1 1/4", 1 1/2", 2" (Iron pipe)	1 each
Bonding Clamp	FGP-GC-3	1 1/2", 2" (TP/CS)	2 1/2" - 4" (Iron pipe)	1 each

Note: Omega Flex, Inc. stocks regulators from various listed manufacturers. There will be a 15% charge added to regulator orders requesting shipment of a specific brand of regulator.

Description	Part Number	Capacity MBTU/h**	Size	Pkg. Qty	Lb.
Regulator 2 PSI (8" w.c.)	FGP-REG-3	250	1/2"	1 each	.8
Regulator 2 PSI (11" w.c.)	FGP-REG-3P	368 LP	1/2"	1 each	.8
Regulator 2 PSI (8" w.c.)	FGP-REG-5A	550	3/4"	1 each	1.9
Regulator 2 PSI (11" w.c.)	FGP-REG-5P	836 LP	3/4"	1 each	1.9
Regulator 2 PSI (8" w.c.)	FGP-REG-7L	1000	1"	1 each	1.6
Regulator 5 PSI* w/OPD	FGP-REG-3L47	125	1/2"	1 each	1.1
Regulator 5 PSI* w/OPD	FGP-REG-3L48	200	1/2"	1 each	1.2
Regulator 5 PSI* w/OPD	FGP-REG-5AL48	320	3/4"	1 each	2.3
Regulator 5 PSI* w/OPD	FGP-REG-5AL600	425	3/4"	1 each	3.4
Regulator 5 PSI* w/OPD	FGP-REG-5AL601	465	1"	1 each	3.4
Rain Cap for REG-3/3P	FGP-CAP-3	---	1/8"	1 each	.1
Rain Cap for REG-5A/5P	FGP-CAP-5A	---	3/8"	1 each	.15
Installation Tags	FGP-ITAG-50	---	All	50/pkg	.35
Gas Label	FGP-GAS LABEL	---	All	500/Roll	.25
High Pressure Tags	FGP-TAG-20	---	All	20/pkg	.3

Note: All regulators include an approved vent limiter.

*Regulators 3L48, 3L47, 5AL48, 5AL600, 5AL601 have MAX 5 PSI Inlet Pressure which includes an OPD for pressures above 2 PSI when used as a line Pressure Regulator. (Over-pressurization device included and attached to these units).

**Capacity is total load as line pressure regulator. (Capacity decreases for single appliance load. Contact factory.)

CounterStrike® Accessories and Tools

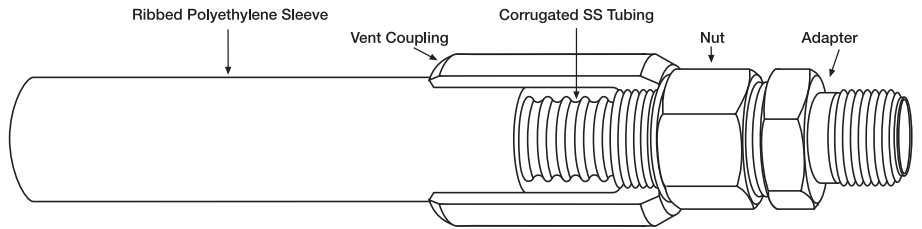
CounterStrike® Accessories and Tools					
	Description	Part Number	Size	Pkg. Qty	Lb.
Shut Off Valves Quick Disconnect Brass Housing with Stainless Steel Ball		Ball Valve 5psi 1/2"	1/2"	1 each	.5
		Ball Valve 5psi 3/4"	3/4"	1 each	.8
		Sturgis Quick Disconnect	1/2"	1 each	.9
Note: Special tools not required.					
Tube Cutters		Cutter No. 15	3/8"-1"	1 each	1.1
		Cutter No. 151	3/8" – 3/4"	1 each	.9
		Cutter No. 152	1" – 2"	1 each	1.9
		Cutter wheel	1" – 2"	1 each	.1
Note: To cut 1" to 2" size CounterStrike® use a cutting wheel FGP-E-5272.					
Striker Plate Carbon Steel Hardened		Quarter Striker Plate	3" x 2"	250/box	.08
		Half Striker Plate	3" x 7"	100/box	.4
		Three Quarter Striker Plate	3" x 9"	100/box	.4
		Full Striker	3" x 12"	50/box	.42
		6½" X 17 Striker Plate	6½" X 17"	1 each	1.8
Floppy Strip Wound Conduit Type RW Galvanized Steel		Floppy-fits 3/8" Cut 1 ft.	3/4"	50 box	11
		Floppy-fits 1/2" Cut 1 ft.	1"	50 box	15
		Floppy-fits 3/4" Cut 1 ft.	1¼"	25 box	17.5
		Floppy-fits 1" Cut 1 ft.	1½"	25 box	24
		Floppy-fits 3/8"	3/4"	50 ft/coil	9
		Floppy-fits 1/2"	1"	50 ft/coil	13
		Floppy-fits 3/4"	1¼"	25 ft/coil	15.5
		Floppy-fits 1"	1½"	25 ft/coil	22
		Floppy-fits 1¼"	2"	25 ft/coil	28.5
		Floppy-fits 1½"	2½"	25 ft/coil	46
Silicone Tape Silicone Rubber		Floppy-fits 2"	3"	25 ft/coil	51
		Tape-Black	1" x 12yd	Roll 12 yd	.3
Leak Check		Non-Corrosive leak check solution	1 Quart	12/case	2.3



TracPipe® PS-II Underground Gas Piping

TracPipe® PS-II Underground Gas Piping PATENTED

TracPipe PS-II is a pre-sleeved gas installation system for underground, rooftop, or exterior wall applications that is more cost-effective and easier to install vs. our original **TracPipe PS** system.



Description	Part Number	Size	Reel Length	Lb./ Reel
TracPipe PS-II 3/8"	FGP-UGP-375-250	3/8"	250 ft./reel	57.5
TracPipe PS-II 1/2"	FGP-UGP-500-250	1/2"	250 ft./reel	82.5
TracPipe PS-II 1/2"	FGP-UGP-500-100	1/2"	100 ft./reel	33
TracPipe PS-II 3/4"	FGP-UGP-750-250	3/4"	250 ft./reel	107.5
TracPipe PS-II 3/4"	FGP-UGP-750-100	3/4"	100 ft./reel	43
TracPipe PS-II 1"	FGP-UGP-100-250	1"	250 ft./reel	142.5
TracPipe PS-II 1"	FGP-UGP-100-100	1"	100 ft./reel	57
TracPipe PS-II 1 1/4"	FGP-UGP-125-150	1 1/4"	150 ft./reel	137
TracPipe PS-II 1 1/2"	FGP-UGP-150-150	1 1/2"	150 ft./reel	150.5
TracPipe PS-II 2"	FGP-UGP-200-150	2"	150 ft./reel	220

Male Adapters

Description	Part Number	Size	Pkg. Qty.	Lb.
TracPipe PS-II Male Adapter	FGP-UGF-375	3/8" NPT Male	25/box	.45
TracPipe PS-II Male Adapter	FGP-UGF-500	1/2" NPT Male	20/box	.50
TracPipe PS-II Male Adapter	FGP-UGF-750	3/4" NPT Male	16/box	.65
TracPipe PS-II Male Adapter	FGP-UGF-1000	1" NPT Male	9/box	.90
TracPipe PS-II Male Adapter	FGP-UGF-1250	1 1/4" NPT Male	9/box	1.60
TracPipe PS-II Male Adapter	FGP-UGF-1500	1 1/2" NPT Male	9/box	2.65
TracPipe PS-II Male Adapter	FGP-UGF-2000	2" NPT Male	5/box	4.30

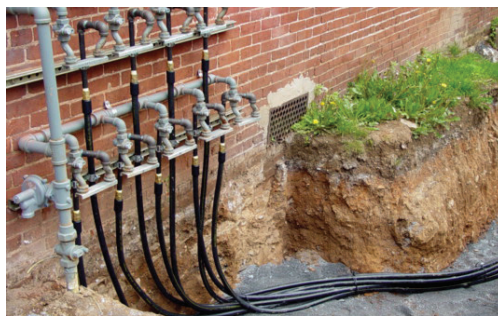
Couplings

TracPipe PS-II Coupling	FGP-UGC-375	3/8" T/P Coupling	25/box	.65
TracPipe PS-II Coupling	FGP-UGC-500	1/2" T/P Coupling	20/box	.70
TracPipe PS-II Coupling	FGP-UGC-750	3/4" T/P Coupling	16/box	1.05
TracPipe PS-II Coupling	FGP-UGC-1000	1" T/P Coupling	9/box	1.40
TracPipe PS-II Coupling	FGP-UGC-1250	1 1/4" T/P Coupling	9/box	2.50
TracPipe PS-II Coupling	FGP-UGC-1500	1 1/2" T/P Coupling	8/box	4.25
TracPipe PS-II Coupling	FGP-UGC-2000	2" T/P Coupling	5/box	6.90

Male Adapter



Coupling



Warranty

LIMITED WARRANTY: ALL SALES ARE SUBJECT TO OUR LIMITED WARRANTY, WHICH IS AVAILABLE AT [HTTPS://OMEGAFLEXCORP.COM/LEGAL-INFORMATION](https://omegaflexcorp.com/legal-information) AND



TracPipe^{PS-II}
Polyethylene-Sleeved Flexible Gas Piping by OmegaFlex[®]

TracPipe[®] CounterStrike[®]
Flexible Gas Piping by OmegaFlex.
PATENTED

OmegaFlex[®]

Omega Flex, Inc.

451 Creamery Way • Exton, PA 19341-2509

1-800-671-8622 • www.omegaflex.com

ISO 9001 Registered Company

FGP 745 04/25



FOR PRODUCT LISTING



FOR FIRE RESISTANCE

