

TracPipe Submittal Drawings

<u>Pg No.</u>	<u>Doc No.</u>	<u>Description</u>	<u>Applicable P/N(s)</u>
1	FGP-SUB-CPG	Submittals Cover Page	N/A
2	FGP-SUB-002	Counterstrike Gas Piping, 3/8" through 2"	FGP-CS-XXX
3	FGP-SUB-003	TracPipe PS-II Gas Piping, 3/8" through 2"	FGP-UGP-XXX
4	FGP-SUB-004	AutoFlare Straight Fitting Assy	FGP-FST-XXX
5	FGP-SUB-005	AutoFlare Female Straight Fitting Assy	FGP-FSTF-XXX
6	FGP-SUB-006	AutoFlare Coupling Assy	FGP-CPLG-XXX
7	FGP-SUB-008	Flange L Bracket	FGP-TERM-BRAC
8	FGP-SUB-014	AutoFlare x Pipe NPT Tee	FGP-TXXX-XXX
9	FGP-SUB-015	AutoFlare Tee Assy	FGP-TFXXX-TXXX / FGP-RT-XX
11	FGP-SUB-016	Key Valve Bracket Assy	FGP-KVB-XXX
12	FGP-SUB-017	Meter Termination Stub-out M-NPT	FGP-XXX MT
13	FGP-SUB-018	Meter Stud Bracket	FGP-STUD-BRAC
14	FGP-SUB-019	Appliance Stub-out M-NPT	FGP-ASP-500
15	FGP-SUB-020	Fireplace Stub-out M-NPT	FGP-FPT-500
16	FGP-SUB-022	Meter Termination Bracket	FGP-MT-BRAC
17	FGP-SUB-023	Metal Wall Box w/ Valve Assy	FGP-WBTM-XXX
18	FGP-SUB-024	Manifolds FGP-MI-SIZE	FGP-MI-PC, PC-1X, PC-2X
19	FGP-SUB-025	Manifold Bracket	FGP-MB2
20	FGP-SUB-026	Stackable Manifold	FGP-MI-ST-XXX
21	FGP-SUB-027	Stackable Manifold Bracket	FGP-MB-ST
22	FGP-SUB-028	Load Center w/ Manifold Bracket	FGP-LC
23	FGP-SUB-029	Bonding Clamps	FGP-GC-X
24	FGP-SUB-030	PS-II Adapter Assy	FGP-UGF-XXX
25	FGP-SUB-031	PS-II Coupling Assy	FGP-UGC-XXX
26	FGP-SUB-032	Striker Plates	FGP-SP-XXX
27	FGP-SUB-033	Ball Valve 5 psi	FGP-WBV-XXX
28	FGP-SUB-034	Quick Disconnect	FGP-QDS
29	FGP-SUB-036	90 deg Appliance Stub-out	FGP-ASP90S-XXX
30	FGP-SUB-044	Self Bonding Silicone Tape - Black/Yellow	FGP-SRT-FGP-915-10H-12BL
31	FGP-SUB-045	AutoFlare Steel Flange Mount	FGP-RFG-XXX
32	FGP-SUB-046	90 deg AutoFlare Steel Flange Mount	FGP-ELS-500
33	FGP-SUB-047	90 deg AutoFlare Steel Flange Mount (Valve - Female NPT) Assembly	FGP-RF90V-XXX
34	FGP-SUB-048	Floppy Galvanized Steel Conduit Line	FGP-FPY-XXX-XX
35	FGP-SUB-049	Pressure Regulators 2 psi systems Line	FGP-REG-XX
36	FGP-SUB-050	Pressure Regulators 5 psi systems	FGP-REG-XXXXX

NOTE

Clicking on any page number in the table of contents will take the user straight to the page number that was selected. To return to the table of contents click anywhere at the bottom of any page.

Submittal Package

Project:

Engineer:

Contractor:

Submitted by:

Date:

*Gas Piping System(s) Included (check all that apply):

- TracPipe
- Counterstrike
- TracPipe PS-II

****Gas Piping System includes all related components attached***

Product

CounterStrike Flexible Gas Piping, 3/8" through 2"

Project Information

Job Name:	Date Submitted:
Location:	Submitted By:
Engineer:	Approved By:
Contractor:	Manufacturer's Rep:

Installation

Must be installed in accordance with the TracPipe Design Guide and Installation Instructions and all applicable codes

Application Information

Conductive Jacketed Flexible Gas Piping for use in Natural Gas and Liquefied Petroleum (Propane) Gas applications. Used with TracPipe AutoFlare fittings and accessories.

Technical Data

Materials

Tubing	ASTM A240 300 Series Stainless Steel
Jacket	UV/Ozone Resistant Polyethylene with flame retardant

Pressure Ratings

Specification Operating Pressure	25 PSIG
CSA International Evaluation Report - Max Operating Pressure, 3/8" through 1-1/4"	125 PSIG

Temperature Ratings

Operating Temperature Range	-20 to 200 Deg F
Tubing Melting Point	2400 Deg F
Jacket Melting Point	350 Deg F



Codes

ICC Codes (IFGC, IRC, IMC, IPC), NFPA 54, UPC, CAN/CSA B149.1, NFPA 58

Standards

ANSI LC1 / CSA 6.26, UL 723 (ASTM E84), ICC LC 1024, ANSI Z223.1

Listings

CSA, ICC PMG 1058, UL (Through Penetration Firestop Systems), IAPMO ES ER-0227, ICC-ESR-4565 (Seismic Evaluation)

Dimensional Information

✓	Size	*P/N	EHD	OD w/ Jacket (Nom. in.)	OD w/o Jacket (Nom. in.)	ID (Nom. In.)	Tubing Wall Thickness (in.)	Weight (lbs/ft)
<input type="checkbox"/>	3/8"	FGP-CS-375-XXX	15	0.700	0.600	0.440	0.010	0.15
<input type="checkbox"/>	1/2"	FGP-CS-500-XXX	19	0.888	0.788	0.597	0.010	0.21
<input type="checkbox"/>	3/4"	FGP-CS-750-XXX	25	1.140	1.040	0.820	0.010	0.28
<input type="checkbox"/>	1"	FGP-CS-1000-XXX	31	1.415	1.315	1.060	0.010	0.39
<input type="checkbox"/>	1-1/4"	FGP-CS-1250-XXX	39	1.700	1.600	1.290	0.012	0.52
<input type="checkbox"/>	1-1/2"	FGP-CS-1500-XXX	46	1.940	1.840	1.525	0.012	0.73
<input type="checkbox"/>	2"	FGP-CS-2000-XXX	62	2.515	2.415	2.060	0.012	0.91

*XXX - Denotes Reel size (length of pipe) in feet

Omega Flex, Inc. * 451 Creamery Way* Exton, PA 19341
Tel: 610-524-7272 * Toll Free: 800-671-8622 * Fax: 610-524-7282

www.omegaflex.com

Product

TracPipe PS-II Flexible Gas Piping, 3/8" through 2"

Project Information

Job Name:	Date Submitted:
Location:	Submitted By:
Engineer:	Approved By:
Contractor:	Manufacturer's Rep:

Installation

Must be installed in accordance with the TracPipe Design Guide and Installation Instructions and all applicable codes

Application Information

Black Jacketed "Pre-Sleeved" Flexible Gas Piping approved for direct burial in Underground Natural Gas and Liquefied Petroleum (Propane) Gas applications. Used with TracPipe PS-II Male Adapter fittings or Couplings.

Technical Data

Materials

Tubing	ASTM A240 300 Series Stainless Steel
Jacket	UV/Ozone Resistant Polyethylene

Pressure Ratings

Specification Operating Pressure	25 PSIG
CSA International Evaluation Report - Max Operating Pressure, 3/8" through 1-1/4"	125 PSIG

Temperature Ratings

Operating Temperature Range	-20 to 200 Deg F
Tubing Melting Point	2400 Deg F
Jacket Melting Point	350 Deg F



Codes

ICC Codes (IFGC, IRC, IMC, IPC), NFPA 54, UPC, CAN/CSA B149.1, NFPA 58

Standards

ANSI LC1 / CSA 6.26, ANSI Z223.1

Listings

CSA, ICC PMG 1052, IAPMO (UPC) File No. 4665, ICC-ESR-4565 (Seismic Evaluation)

Dimensional Information

✓	Size	*P/N	EHD	OD w/ Jacket (Nom. in.)	OD w/o Jacket (Nom. in.)	ID (Nom. In.)	Tubing Wall Thickness (in.)	Weight (lbs/ft)
<input type="checkbox"/>	3/8"	FGP-UGP-375-XXX	15	0.820	0.600	0.440	0.010	0.23
<input type="checkbox"/>	1/2"	FGP-UGP-500-XXX	19	1.080	0.788	0.597	0.010	0.33
<input type="checkbox"/>	3/4"	FGP-UGP-750-XXX	25	1.320	1.040	0.820	0.010	0.43
<input type="checkbox"/>	1"	FGP-UGP-100-XXX	31	1.600	1.315	1.060	0.010	0.57
<input type="checkbox"/>	1-1/4"	FGP-UGP-125-XXX	39	1.960	1.600	1.290	0.012	0.91
<input type="checkbox"/>	1-1/2"	FGP-UGP-150-XXX	46	2.180	1.840	1.525	0.012	1.00
<input type="checkbox"/>	2"	FGP-UGP-200-XXX	62	2.800	2.415	2.060	0.012	1.47

*XXX - Denotes Reel size (length of pipe) in feet

Omega Flex, Inc. * 451 Creamery Way* Exton, PA 19341

Tel: 610-524-7272 * Toll Free: 800-671-8622 * Fax: 610-524-7282

www.omegaflex.com

Product

AutoFlare Straight Fitting (Male-NPT) Assembly for TracPipe and CounterStrike

Project Information

Job Name:	Date Submitted:
Location:	Submitted By:
Engineer:	Approved By:
Contractor:	Manufacturer's Rep:

Installation

Must be installed in accordance with the TracPipe Design Guide and Installation Instructions and all applicable codes

Application Information

Transition fitting between TracPipe or CounterStrike Tubing and NPT thread. Fitting thread is Male NPT. For use indoor, outdoor, and concealed location applications.

Technical Data

Materials

Nut, Adapter, and Split Rings	Yellow Brass
Insert and 1" Split Rings	Stainless Steel

Pressure Ratings (used with tubing)

Specification Operating Pressure	25 PSIG
CSA International Evaluation Report - Max Operating Pressure, 3/8" through 1-1/4"	125 PSIG

Temperature Ratings (used with tubing)

Operating Temperature Range	-20 to 200 Deg F
-----------------------------	------------------



Codes

ICC Codes (IFGC, IRC, IMC, IPC), NFPA 54 , UPC, CAN/CSA B149.1, NFPA 58

Standards

ANSI LC1 / CSA 6.26. ANSI Z223.1

Listings

CSA, ICC PMG 1046 / 1058, IAPMO (UPC) File No. 3682 / ES ER-0227

Dimensional Information

✓	Size	P/N	Diameter across flats (Nom. in.)	Fitting length (Nom. in.)	TracPipe or CounterStrike Size	Male NPT Pipe size	Weight (lbs)
<input type="checkbox"/>	3/8"	FGP-FST-375N	1"	2"	3/8"	3/8"	0.3
<input type="checkbox"/>	3/8"x1/2"	FGP-FST-375	1"	2"	3/8"	1/2"	0.4
<input type="checkbox"/>	1/2"	FGP-FST-500	1-1/8"	2"	1/2"	1/2"	0.4
<input type="checkbox"/>	1/2"x3/4"	FGP-RST500-750	1-1/8"	2"	1/2"	3/4"	0.4
<input type="checkbox"/>	3/4"	FGP-FST-750	1-3/8"	2-1/8"	3/4"	3/4"	0.5
<input type="checkbox"/>	3/4"x1/2"	FGP-RST750-500	1-3/8"	2"	3/4"	1/2"	0.5
<input type="checkbox"/>	1"	FGP-FST-1000	1-5/8"	2-3/8"	1"	1"	0.7
<input type="checkbox"/>	1"x3/4"	FGP-RST1000-750	1-5/8"	2-1/8"	1"	3/4"	0.7
<input type="checkbox"/>	1-1/4"	FGP-FST-1250	2-1/8"	2-5/8"	1-1/4"	1-1/4"	1.5
<input type="checkbox"/>	1-1/2"	FGP-FST-1500	2-1/2"	3"	1-1/2"	1-1/2"	2.1
<input type="checkbox"/>	2"	FGP-FST-2000	3-1/4"	3-1/16"	2"	2"	3.5

Product

AutoFlare Straight Fitting (Female-NPT) Assembly for TracPipe and CounterStrike

Project Information

Job Name:	Date Submitted:
Location:	Submitted By:
Engineer:	Approved By:
Contractor:	Manufacturer's Rep:

Installation

Must be installed in accordance with the TracPipe Design Guide and Installation Instructions and all applicable codes

Application Information

Transition fitting between TracPipe or CounterStrike Tubing and NPT thread. Fitting thread is Female NPT. For use indoor, outdoor, and concealed location applications.

Technical Data

Materials

Nut, Adapter, and Split Rings	Yellow Brass
Insert and 1" Split Rings	Stainless Steel

Pressure Ratings (used with tubing)

Specification Operating Pressure	25 PSIG
CSA International Evaluation Report - Max Operating Pressure, 3/8" through 1-1/4"	125 PSIG

Temperature Ratings (used with tubing)

Operating Temperature Range	-20 to 200 Deg F
-----------------------------	------------------



Codes

ICC Codes (IFGC, IRC, IMC, IPC), NFPA 54, UPC, CAN/CSA B149.1, NFPA 58

Standards

ANSI LC1 / CSA 6.26 ANSI Z223.1

Listings

CSA, ICC PMG 1046 / 1058, IAPMO (UPC) File No. 3682 / ES ER-0227

Dimensional Information

✓	Size	P/N	Diameter across flats (Nom. in.)	Fitting length (Nom. in.)	TracPipe or CounterStrike Size	Female NPT Pipe size	Weight (lbs)
<input type="checkbox"/>	3/8"x1/2"	FGP-FSTF-375	1"	1-7/16"	3/8"	1/2"	0.2
<input type="checkbox"/>	1/2"	FGP-FSTF-500	1-1/8"	1-1/2"	1/2"	1/2"	0.3
<input type="checkbox"/>	3/4"	FGP-FSTF-750	1-3/8"	1-3/4"	3/4"	3/4"	0.5
<input type="checkbox"/>	1"	FGP-FSTF-1000	1-5/8"	1-3/4"	1"	1"	0.6

Product

AutoFlare Coupling Assembly for TracPipe and CounterStrike

Project Information

Job Name:	Date Submitted:
Location:	Submitted By:
Engineer:	Approved By:
Contractor:	Manufacturer's Rep:

Installation

Must be installed in accordance with the TracPipe Design Guide and Installation Instructions and all applicable codes

Application Information

Coupling fitting for use between like sizes of TracPipe or CounterStrike Tubing. For indoor, outdoor, and concealed location applications.

Technical Data

Materials

Nut, Adapter, and Split Rings	Yellow Brass
Insert and 1" Split Rings	Stainless Steel

Pressure Ratings (used with tubing)

Specification Operating Pressure	25 PSIG
CSA International Evaluation Report - Max Operating Pressure, 3/8" through 1-1/4"	125 PSIG

Temperature Ratings (used with tubing)

Operating Temperature Range	-20 to 200 Deg F
-----------------------------	------------------



Codes

ICC Codes (IFGC, IRC, IMC, IPC), NFPA 54, UPC, CAN/CSA B149.1, NFPA 58

Standards

ANSI LC1 / CSA 6.26, ANSI Z223.1

Listings

CSA, ICC PMG 1046 / 1058, IAPMO (UPC) File No. 3682 / ES ER-0227

Dimensional Information

✓	Size	P/N	Diameter across flats (Nom. in.)	Fitting length (Nom. in.)	TracPipe or CounterStrike Size	Weight (lbs)
<input type="checkbox"/>	3/8"	FGP-CPLG-375	1"	2"	3/8" X 3/8"	0.3
<input type="checkbox"/>	1/2"	FGP-CPLG-500	1-1/8"	2-1/16"	1/2" X 1/2"	0.5
<input type="checkbox"/>	3/4"	FGP-CPLG-750	1-3/8"	2-1/4"	3/4" X 3/4"	0.7
<input type="checkbox"/>	1"	FGP-CPLG-1000	1-5/8"	2-11/32"	1" X 1"	0.9
<input type="checkbox"/>	1-1/4"	FGP-CPLG-1250	2-1/8"	2-7/8"	1-1/4" X 1-1/4"	2.0
<input type="checkbox"/>	1-1/2"	FGP-CPLG-1500	2-1/2"	3-3/8"	1-1/2" X 1-1/2"	3.3
<input type="checkbox"/>	2"	FGP-CPLG-2000	3-1/4"	3-5/8"	2" X 2"	5.5

Product

Mounting Bracket for Flange Fitting Assembly (optional)

Project Information

Job Name: _____ Date Submitted: _____

Location: _____ Submitted By: _____

Engineer: _____ Approved By: _____

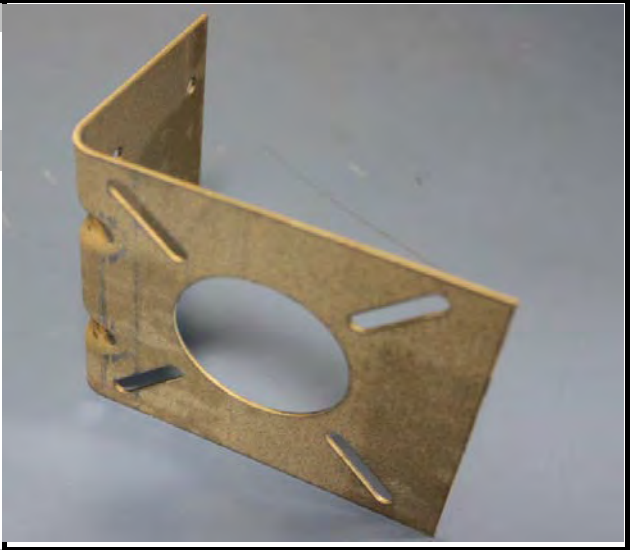
Contractor: _____ Manufacturer's Rep: _____

Installation

Must be installed in accordance with the TracPipe Design Guide and Installation Instructions and all applicable codes

Application Information

May be used for rigid mounting of a TracPipe or CounterStrike Flange Fitting. For indoor, outdoor and concealed location applications.



Technical Data

Materials

Galvanized Steel

Pressure Ratings (used with tubing)

N/A

Temperature Ratings (used with tubing)

Operating Temperature Range -20 to 200 Deg F

Codes

Standards

Listings

Dimensional Information

	Size	P/N	L x W x D	TracPipe or CounterStrike Size	Weight (lbs)
<input checked="" type="checkbox"/>	ALL	FGP-TERM BRAC	5" x 5" x 2-3/4"	3/8" thru 1-1/4"	0.3

Product

AutoFlare Tee Fitting Tubing by Pipe Outlet for TracPipe and CounterStrike

Project Information

Job Name:	Date Submitted:
Location:	Submitted By:
Engineer:	Approved By:
Contractor:	Manufacturer's Rep:

Installation

Must be installed in accordance with the TracPipe Design Guide and Installation Instructions and all applicable codes

Application Information

AutoFlare Tee fittings for TracPipe and CounterStrike. Tubing Runs by Pipe Branch. Branch Thread is NPT



Technical Data

Materials

Nut, Adapter, and Split Rings	Yellow Brass
Insert and 1" Split Rings	Stainless Steel

Pressure Ratings (used with tubing)

Specification Operating Pressure	25 PSIG
CSA International Evaluation Report - Max Operating Pressure	125 PSIG

Temperature Ratings (used with tubing)

Operating Temperature Range	-20 to 200 Deg F
-----------------------------	------------------

Codes

ICC Codes (IFGC, IRC, IMC, IPC), NFPA 54, UPC, CAN/CSA B149.1, NFPA 58

Standards

ANSI LC1 / CSA 6.26, ANSI Z223.1


Listings

CSA, ICC PMG 1046 / 1058, IAPMO (UPC) File No. 3682 / ES ER-0227

Dimensional Information

✓	Size	P/N	NPT Size	Diameter across flats (Nom. in.)	TracPipe or CounterStrike Size	*Overall Length (Nom. in.)	*Height (Nom. in.)	Weight (lbs)
<input type="checkbox"/>	1/2"	FGP-T500-750	3/4" M-NPT	1-1/8"	1/2"	3.34	1.97	1.0
<input type="checkbox"/>	1/2"	FGP-T500-500	1/2" F-NPT	1-1/8"	1/2"	3.05	1.82	1.0
<input type="checkbox"/>	3/4"	FGP-T750-500	1/2" F-NPT	1-3/8"	3/4"	3.40	1.97	1.6
<input type="checkbox"/>	3/4"	FGP-T750-750	3/4" F-NPT	1-3/8"	3/4"	3.40	1.97	1.6
<input type="checkbox"/>	1"	FGP-T1000-1000	1" F-NPT	1-5/8"	1"	3.87	2.52	2.2

**Note: Overall Length (OAL) and Height dimensions shown as 2 decimal are NOMINAL dimensions ONLY.*

Product								
AutoFlare Tee Fitting Tubing by Tubing for TracPipe and CounterStrike								
Project Information								
Job Name:								
Location:								
Engineer:								
Contractor:								
Installation								
Must be installed in accordance with the TracPipe Design Guide and Installation Instructions and all applicable codes								
Application Information								
AutoFlare Tee fittings for TracPipe and CounterStrike. Tubing by Tubing Runs. Branch is Tubing.								
								
Technical Data								
Materials								
Nut, Adapter, and Split Rings			Yellow Brass					
Insert and 1" Split Rings			Stainless Steel					
Pressure Ratings (used with tubing)								
Specification Operating Pressure						25 psig		
CSA international Evaluation Report - Max Operating Pressure,						3/8" through 1-1/4"		
						125 PSIG		
Temperature Ratings (used with tubing)								
Operating Temperature Range						-20 to 200 Deg F		
Codes								
ICC Codes (IFGC, IRC, IMC, IPC), NFPA 54, UPC, CAN/CSA B149.1, NFPA 58								
Standards								
ANSI LC1 / CSA 6.26, ANSI Z223.1								
Listings								
CSA, ICC PMG 1046 / 1058, IAPMO (UPC) File No. 3682 / ES ER-0227								
Dimensional Information								
✓			<i>R X R X B Sizes</i>					
	<i>Size</i>	<i>P/N</i>	<i>TracPipe or CounterStrike Sizes</i>	<i>Diameter across Hex flats R X R X B (Nom. in.)</i>	<i>*Overall Length (Nom. in.)</i>	<i>*Height (Nom. In.)</i>	<i>Weight (lbs)</i>	
<input type="checkbox"/>	1/2"	FGP-TF500-T500	1/2" X 1/2" X 1/2"	1-1/8" x 1-1/8" x 1-1/8"	3.05	2.10	1.00	
<input type="checkbox"/>	3/4"	FGP-TF750-T500	3/4" X 3/4" X 3/4"	1-3/8" x 1-3/8" x 1-3/8"	3.40	2.33	1.60	
<input type="checkbox"/>	1"	FGP-TF1000-T1000	1" X 1" X 1"	1-5/8" x 1-5/8" x 1-5/8"	3.87	2.78	2.20	
<input type="checkbox"/>	1/2"	FGP-RT-501	1/2" X 3/8" X 3/8"	1-1/8" x 1" x 1"	3.02	2.08	0.90	
<input type="checkbox"/>	3/4"	FGP-RT-751	3/4" X 1/2" X 3/8"	1-5/8" x 1-3/8" x 1"	3.30	2.34	1.10	
<input type="checkbox"/>	3/4"	FGP-RT-752	3/4" X 1/2" X 1/2"	1-5/8" x 1-3/8" x 1-3/8"	3.36	2.34	1.10	
<input type="checkbox"/>	1"	FGP-RT-1001	1" X 3/4" X 1/2"	1-5/8" x 1-3/8" x 1-1/8"	3.86	2.54	1.80	
<input type="checkbox"/>	1"	FGP-RT-1002	1" X 3/4" X 3/4"	1-5/8" x 1-3/8" x 1-3/8"	3.86	2.79	1.80	
<input type="checkbox"/>	3/4"	FGP-TF750-T500	3/4" X 3/4" X 1/2"	1-3/8" x 1-3/8" x 1-1/8"	3.39	2.34	1.60	
<input type="checkbox"/>	1"	FGP-TF1000-T750	1" X 1" X 3/4"	1-5/8" x 1-5/8" x 1-3/8"	3.88	2.76	2.10	
<input type="checkbox"/>	1"	FGP-TF1000-T500	1" X 1" X 1/2"	1-5/8" x 1-5/8" x 1-1/8"	3.89	2.78	2.20	
<input type="checkbox"/>	1-1/4"	FGP-TF1250-T1000	1-1/4" X 1-1/4" X 1"	2-1/8" x 2-1/8" x 1-5/8"	4.04	3.07	2.70	
<input type="checkbox"/>	1-1/4"	FGP-TF1250-T750	1-1/4" X 1-1/4" X 3/4"	2-1/8" x 2-1/8" x 1-3/8"	4.04	3.07	2.60	
<input type="checkbox"/>	1-1/4"	FGP-TF1250-T500	1-1/4" X 1-1/4" X 1/2"	2-1/8" x 2-1/8" x 1-1/8"	4.02	2.99	2.60	
<input type="checkbox"/>	1-1/4"	FGP-RT-1251	1-1/4" x 1" x 1"	2-1/8" x 1-5/8" x 1-5/8"	3.81	3.07	2.20	
<input type="checkbox"/>	1-1/4"	FGP-RT-1252	1-1/4" x 1" x 3/4"	2-1/8" x 1-5/8" x 1-3/8"	3.86	3.07	2.20	
<input type="checkbox"/>	1-1/4"	FGP-RT-1253	1-1/4" x 1" x 1/2"	2-1/8" x 1-5/8" x 1-1/8"	3.86	3.02	2.10	
<input type="checkbox"/>	1-1/2"	FGP-TF1500-T1250	1-1/2" x 1-1/2" x 1-1/4"	2-1/2" x 2-1/2" x 2-1/8"	4.75	3.67	4.40	
<input type="checkbox"/>	1-1/2"	FGP-TF1500-T1000	1-1/2" x 1-1/2" x 1"	2-1/2" x 2-1/2" x 1-5/8"	4.76	3.44	4.10	
<input type="checkbox"/>	1-1/2"	FGP-TF1500-T750	1-1/2" x 1-1/2" x 3/4"	2-1/2" x 2-1/2" x 1-3/8"	4.76	3.45	4.10	
<input type="checkbox"/>	1-1/2"	FGP-TF1500-T500	1-1/2" x 1-1/2" x 1/2"	2-1/2" x 2-1/2" x 1-1/8"	4.76	3.40	4.00	
<input type="checkbox"/>	1-1/2"	FGP-RT-1501	1-1/2" x 1-1/4" x 1-1/4"	2-1/2" x 2-1/8" x 2-1/8"	4.59	3.75	3.70	
<input type="checkbox"/>	1-1/2"	FGP-RT-1502	1-1/2" x 1-1/4" x 1"	2-1/2" x 2-1/8" x 1-5/8"	4.57	3.59	3.60	
<i>(P/Ns continued on next page)</i>								

Omega Flex, Inc. * 451 Creamery Way* Exton, PA 19341

Tel: 610-524-7272 * Toll Free: 800-671-8622 * Fax: 610-524-7282

www.omegaflex.com

AutoFlare Tee Fitting Tubing by Tubing for TracPipe and CounterStrike

Dimensional Information

✓	Size	P/N	R X R X B Sizes TracPipe or CounterStrike Sizes	Diameter across Hex flats R X R X B (Nom. in.)	*Overall Length (Nom. in.)	*Height (Nom. In.)	Weight (lbs)
<input type="checkbox"/>	1-1/2"	FGP-RT-1503	1-1/2" x 1-1/4" x 3/4"	2-1/2" x 2-1/8" x 1-3/8"	4.57	3.49	3.6
<input type="checkbox"/>	1-1/2"	FGP-RT-1504	1-1/2" x 1-1/4" x 1/2"	2-1/2" x 2-1/8" x 1-1/8"	4.57	3.30	3.5
<input type="checkbox"/>	2"	FGP-TF2000-T1500	2" x 2" 1-1/2"	3-1/4" x 3-1/4" x 2-1/2"	5.40	4.53	7.4
<input type="checkbox"/>	2"	FGP-TF2000-T1250	2" x 2" x 1-1/4"	3-1/4" x 3-1/4" x 2-1/8"	5.40	4.47	7.2
<input type="checkbox"/>	2"	FGP-TF2000-T1000	2" x 2" x 1"	3-1/4" x 3-1/4" x 1-5/8"	5.40	4.47	7.0
<input type="checkbox"/>	2"	FGP-TF2000-T750	2" x 2" x 3/4"	3-1/4" x 3-1/4" x 1-3/8"	5.39	4.31	7.0
<input type="checkbox"/>	2"	FGP-TF2000-T500	2" x 2" x 1/2"	3-1/4" x 3-1/4" x 1-1/8"	5.39	4.12	7.0
<input type="checkbox"/>	2"	FGP-RT-2001	2" x 1-1/2" x 1-1/2"	3-1/4" x 2-1/2" x 2-1/2"	5.38	4.54	6.5
<input type="checkbox"/>	2"	FGP-RT-2002	2" x 1-1/2" x 1-1/4"	3-1/4" x 2-1/2" x 2-1/8"	5.37	4.43	6.3
<input type="checkbox"/>	2"	FGP-RT-2003	2" x 1-1/2" x 1"	3-1/4" x 2-1/2" x 1-5/8"	5.38	4.27	6.1
<input type="checkbox"/>	2"	FGP-RT-2004	2" x 1-1/2" x 3/4"	3-1/4" x 2-1/2" x 1-3/8"	5.38	4.30	6.1
<input type="checkbox"/>	2"	FGP-RT-2005	2" x 1-1/2" x 1/2"	3-1/4" x 2-1/2" x 1-1/8"	5.38	4.13	6.1

*Note: Overall Length (OAL) and Height dimensions shown as 2 decimal are NOMINAL dimensions ONLY.

Omega Flex, Inc. * 451 Creamery Way* Exton, PA 19341

Tel: 610-524-7272 * Toll Free: 800-671-8622 * Fax: 610-524-7282

www.omegaflex.com

FGP-SUB-015

Rev. 5-24

TracPipe, CounterStrike, PS-II, and AutoFlare, are registered trademarks of Omega Flex, Inc.

page 2/2

Product

Key Valve Bracket Assembly for TracPipe and CounterStrike

Project Information

Job Name:	Date Submitted:
Location:	Submitted By:
Engineer:	Approved By:
Contractor:	Manufacturer's Rep:

Installation

Must be installed in accordance with the TracPipe Design Guide and Installation Instructions and all applicable codes

Application Information

Use for but not limited to rigid mount of fireplace key valve for TracPipe and CounterStrike. May be used indoor, outdoor and in concealed locations.



Technical Data

Materials

Nut, Adapter, and Split Rings	Yellow Brass
Insert	Stainless Steel
Bracket	Galvanized Steel

Pressure Ratings (used with tubing)

Specification Operating Pressure	25 PSIG
CSA International Evaluation Report - Max Operating Pressure	
3/8" through 3/4"	125 PSIG

Temperature Ratings (used with tubing)

Operating Temperature Range	-20 to 200 Deg F
-----------------------------	------------------

Codes

ICC Codes (IFGC, IRC, IMC, IPC), NFPA 54, UPC, CAN/CSA B149.1, NFPA 58

Standards


ANSI LC1 / CSA 6.26, ANSI Z223.1

Listings

CSA, ICC PMG 1046 / 1058, IAPMO (UPC) File No. 3682 / ES ER-0227

Dimensional Information

✓				Diameter	TracPipe or	
Size	P/N			across flats	CounterStrike	Weight (lbs)
				(Nom. in.)	Size	
<input type="checkbox"/> 3/8"	FGP-KVB-375			1"	3/8"	0.50
<input type="checkbox"/> 1/2"	FGP-KVB-500			1-1/8"	1/2"	0.54
<input type="checkbox"/> 3/4" x 1/2"	FGP-KVB750-500			1-3/8"	3/4"	0.77

Product								
Meter Termination Stub-Out (Male - NPT)								
Project Information								
Job Name:			Date Submitted:					
Location:			Submitted By:					
Engineer:			Approved By:					
Contractor:			Manufacturer's Rep:					
Installation								
Must be installed in accordance with the TracPipe Design Guide and Installation Instructions and all applicable codes								
Application Information								
Schedule 40 B.I.P. Meter Stub-Out								
Technical Data								
<u>Materials</u>								
Schedule 40 Black Iron Pipe								
<u>Pressure Ratings (used with tubing)</u>								
Specification Operating Pressure			25 PSIG					
CSA International Evaluation Report - Max Operating Pressure								
3/8" through 3/4"			125 PSIG					
<u>Temperature Ratings (used with tubing)</u>								
Operating Temperature Range			-20 to 200 Deg F					
Codes								
ICC Codes (IFGC, IRC, IMC, IPC), NFPA 54 , UPC, CAN/CSA B149.1, NFPA 58								
Standards								
Listings								
Dimensional Information								
✓			<i>Mounting Flange Dim (Nom. in.)</i>	<i>Fitting length (Nom. in.)</i>				
	<i>Size</i>	<i>P/N</i>			<i>Weight (lbs)</i>			
<input type="checkbox"/>	1/2" x 6"	FGP-1/2X6 MT	5" x 5"	6"	1.10			
<input type="checkbox"/>	1/2" x 12"	FGP-1/2X12 MT	5" x 5"	12"	1.58			
<input type="checkbox"/>	3/4" x 6"	FGP-3/4X6 MT	5" x 5"	6"	1.20			
<input type="checkbox"/>	3/4" x 12"	FGP-3/4X12 MT	5" x 5"	12"	1.80			
<input type="checkbox"/>	1" x 6"	FGP-1X6 MT	5" x 5"	6"	1.36			
<input type="checkbox"/>	1" x 12"	FGP-1X12 MT	5" x 5"	12"	1.95			
<input type="checkbox"/>	1-1/4" x 6"	FGP-1-1/4X6 MT	5" x 5"	6"	1.62			
<input type="checkbox"/>	1-1/4" x 12"	FGP-1-1/4X12 MT	5" x 5"	12"	2.78			

Omega Flex, Inc. * 451 Creamery Way* Exton, PA 19341
Tel: 610-524-7272 * Toll Free: 800-671-8622 * Fax: 610-524-7282
www.omegaflex.com

Product

Meter Stub Bracket

Project Information

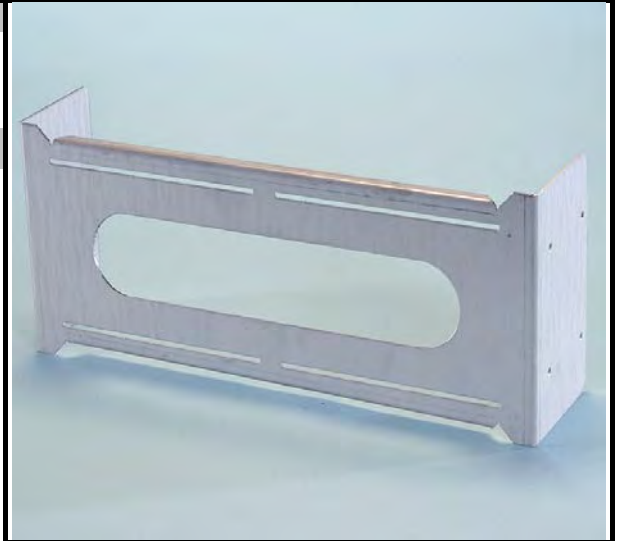
Job Name:	Date Submitted:
Location:	Submitted By:
Engineer:	Approved By:
Contractor:	Manufacturer's Rep:

Installation

Must be installed in accordance with the TracPipe Design Guide and Installation Instructions and all applicable codes

Application Information

For use with FGP-MT Series Meter Terminations (optional) Fits between standard 16" O.C. framing



Technical Data

Materials

Galvanized Steel

Pressure Ratings (used with tubing)

N/A

Temperature Ratings (used with tubing)

Operating Temperature Range -20 to 200 Deg F

Codes


Standards

Listings

Dimensional Information

✓

	Size	P/N	L x H x D	Weight (lbs)
<input type="checkbox"/>	All	FGP-STUD-BRAC	14-1/2" x 6" x 3-3/8"	2.1

Product						
Appliance Stub Out for Use with TracPipe and CounterStrike						
Project Information						
Job Name:			Date Submitted:			
Location:			Submitted By:			
Engineer:			Approved By:			
Contractor:			Manufacturer's Rep:			
Installation						
Must be installed in accordance with the TracPipe Design Guide and Installation Instructions and all applicable codes						
Application Information						
Schedule 40 B.I.P. stub out for use at movable appliance locations, with mounting plate						
Technical Data						
<u>Materials</u>						
Schedule 40 B.I.P. Mounting Plate 12 Ga. Carbon Steel						
<u>Pressure Ratings (used with tubing)</u>						
Specification Operating Pressure		25 PSIG				
CSA International Evaluation Report - Max Operating Pressure, 3/8" through 1-1/4"		125 PSIG				
<u>Temperature Ratings (used with tubing)</u>						
Operating Temperature Range		-20 to 200 Deg F				
Codes						
Standards						
NPT Thread per ANSI B1.20.1						
Listings						
Dimensional Information						
✓			<i>Mounting Flange Dim (Nom.)</i>	<i>Outlet length (Nom. in.)</i>	<i>TracPipe or CounterStrike Size</i>	<i>Weight (lbs)</i>
<input type="checkbox"/>	Size	P/N	5" x 5"	2-1/4"	1/2"	0.72
	1/2"	FGP-ASP-500				

Omega Flex, Inc. * 451 Creamery Way* Exton, PA 19341
Tel: 610-524-7272 * Toll Free: 800-671-8622 * Fax: 610-524-7282
www.omegaflex.com

Product

Fireplace Stub-Out (Male - NPT) for Use with TracPipe and CounterStrike

Project Information

Job Name:	Date Submitted:
Location:	Submitted By:
Engineer:	Approved By:
Contractor:	Manufacturer's Rep:

Installation

Must be installed in accordance with the TracPipe Design Guide and Installation Instructions and all applicable codes

Application Information

Mounting plate with NPT B.I.P. Nipple. Angled to match the fireplace cabinet penetration requirements.



Technical Data

Materials

Schedule 40 B.I.P.
Mounting Plate 12 ga. Carbon Steel

Pressure Ratings (used with tubing)

Specification Operating Pressure	25 PSIG
CSA International Evaluation Report - Max Operating Pressure, 3/8" through 1-1/4"	125 PSIG

Temperature Ratings (used with tubing)

Operating Temperature Range	-20 to 200 Deg F
-----------------------------	------------------

Codes

Standards

NPT Threads per ANSI B1.20.1

Listings

Dimensional Information

<input checked="" type="checkbox"/>	Size	P/N	Flange Mount Dim (Nom)	Fitting length (Nom. in.)	TracPipe or CounterStrike Size	Weight (lbs)
<input type="checkbox"/>	1/2"	FGP-FPT-500	5" x 5"	5-1/2"	1/2"	0.72

Product

Meter Termination Bracket for TracPipe and CounterStrike

Project Information

Job Name:	Date Submitted:
Location:	Submitted By:
Engineer:	Approved By:
Contractor:	Manufacturer's Rep:

Installation

Must be installed in accordance with the TracPipe Design Guide and Installation Instructions and all applicable codes

Application Information

Used with FGP-MT Meter Termination series

Technical Data

Materials

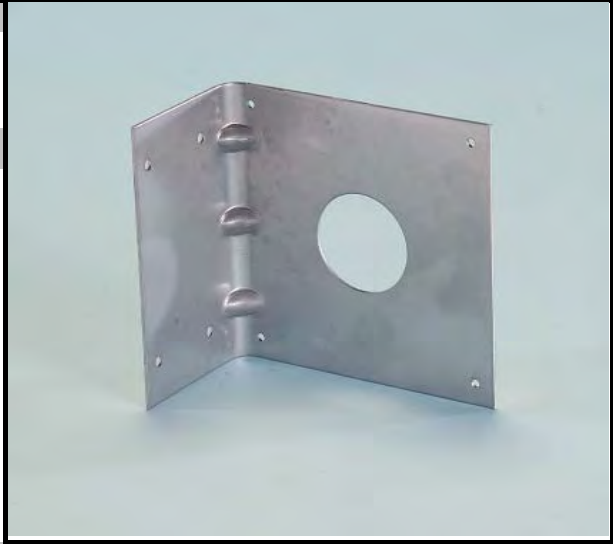
Galvanized Steel

Pressure Ratings (used with tubing)

N/A

Temperature Ratings (used with tubing)

Operating Temperature Range -20 to 200 Deg F



Codes

Standards

Listings

Dimensional Information

	Size	P/N	L x H x D	TracPipe or CounterStrike Size	Weight (lbs)
<input type="checkbox"/>	All	FGP-MT-BRAC	5" x 5" x 2-3/4"	1/2" THRU 1"	0.8

Product

Metal Wall Box with 90° Valve Assembly for use with TracPipe and CounterStrike

Project Information

Job Name:	Date Submitted:
Location:	Submitted By:
Engineer:	Approved By:
Contractor:	Manufacturer's Rep:

Installation

Must be installed in accordance with the TracPipe Design Guide and Installation Instructions and all applicable codes

Application Information

Metal wall box with valve for use with zero clearance appliance installations. Reverse Mounting tabs to accommodate double sheetrock walls. For Indoor Use Only. Wall Box is Fire Rated to UL 1479.

Technical Data

Materials

Nut, Adapter, Flange and Split Rings	Yellow Brass
Insert	Stainless Steel
Wall Box	Powder Coated Steel

Pressure Ratings (used with tubing)

Specification Operating Pressure	1/2 PSIG
Max Test Pressure	60 PSIG

Temperature Ratings (used with tubing)

Operating Temperature Range	-20 to 200 Deg F
-----------------------------	------------------



Codes

ICC Codes (IFGC, IRC, IMC, IPC), NFPA 54, UPC, CAN/CSA B149.1, NFPA 58

Standards

ANSI LC1 / CSA 6.26, ANSI Z21.15, ANSI Z223.1, UL 1479

Listings

CSA, ICC PMG 1046 / 1058, IAPMO (UPC) File No. 3682 / ES ER-0227

Dimensional Information

✓	Size	P/N	Diameter across flats (Nom. in.)		Box Dim L x H x		Valve Outlet NPT	TracPipe or CounterStrike	
			Nut	Valve Body	D	Trim Ring Dim		Size	Weight (lbs)
<input type="checkbox"/>	3/8"	FGP-WBTM-375	1"	1-1/8"	5" x 5" x 3-1/8"	6-3/4" x 6-3/4"	1/2"	3/8"	2.3
<input type="checkbox"/>	1/2"	FGP-WBTM-500	1-1/8"	1-1/8"	5" x 5" x 3-1/8"	6-3/4" x 6-3/4"	1/2"	1/2"	2.3
<input type="checkbox"/>	3/4"	FGP-WBTM-750	1-3/8"	1-3/8"	5" x 5" x 3-1/8"	6-3/4" x 6-3/4"	3/4"	3/4"	2.8

Omega Flex, Inc. * 451 Creamery Way* Exton, PA 19341
Tel: 610-524-7272 * Toll Free: 800-671-8622 * Fax: 610-524-7282
www.omegaflex.com

Product

Manifolds for use with TracPipe and CounterStrike

Project Information

Job Name:	Date Submitted:
Location:	Submitted By:
Engineer:	Approved By:
Contractor:	Manufacturer's Rep:

Installation

Must be installed in accordance with the TracPipe Design Guide and Installation Instructions and all applicable codes

Application Information

Manifolds used to facilitate parallel piping installations. May be used in concealed locations on low pressure systems without Line Pressure regulators. Equipped with a 1/8" F-NPT Pressure test port.

Technical Data

Materials

Cast Iron, Gray Polyester or Epoxy coated

Pressure Ratings (used with tubing)

Specification Operating Pressure	25 PSIG
CSA International Evaluation Report - Max Operating Pressure, 3/8" through 1-1/4"	125 PSIG

Temperature Ratings (used with tubing)

Operating Temperature Range	-20 to 200 Deg F
-----------------------------	------------------



Codes

ICC Codes (IFGC, IRC, IMC, IPC), NFPA 54, UPC, CAN/CSA B149.1, NFPA 58

Standards

ANSI LC1 / CSA 6.26, ANSI Z223.1

Listings

CSA, ICC PMG 1046 / 1058, IAPMO (UPC) File No. 3682 / ES ER-0227

Dimensional Information

✓	P/N	OD (Nom. in.)	Manifold length (Nom. in.)	Run Sizes	Port Size	Weight (lbs)
<input type="checkbox"/>	FGP-MI-PC	1-1/2"	9-5/8"	1/2", 3/4"	1/2"	1.9
<input type="checkbox"/>	FGP-MI-PC-1X	2"	11-1/2"	1", 1-1/4"	3/4"	5.5
<input type="checkbox"/>	FGP-MI-PC-2X	3-1/8"	14-5/8"	1-1/2", 2"	1"	13

Omega Flex, Inc. * 451 Creamery Way* Exton, PA 19341
Tel: 610-524-7272 * Toll Free: 800-671-8622 * Fax: 610-524-7282
www.omegaflex.com

Product

Manifold Bracket

Project Information

Job Name:	Date Submitted:
Location:	Submitted By:
Engineer:	Approved By:
Contractor:	Manufacturer's Rep:

Installation

Must be installed in accordance with the TracPipe Design Guide and Installation Instructions and all applicable codes

Application Information

For use with FGP-MI-PC manifold only

Technical Data

Materials

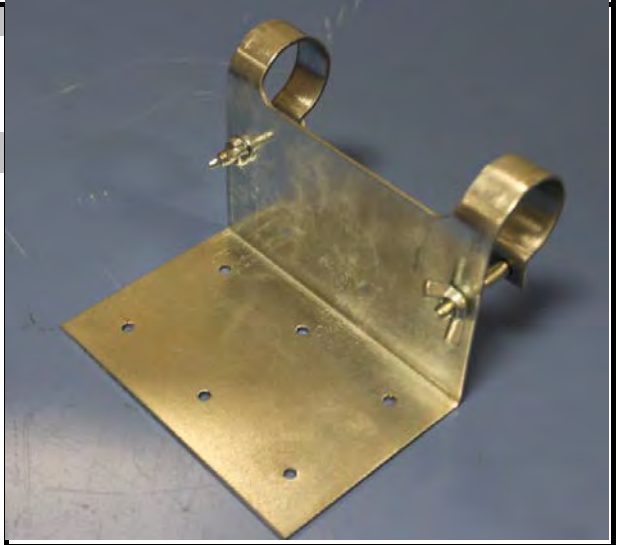
Galvanized Steel

Pressure Ratings (used with tubing)

N/A

Temperature Ratings (used with tubing)

Operating Temperature Range -20 to 200 Deg F



Codes

Standards

Listings

Dimensional Information

✓

	P/N	L x H x D	Weight (lbs)
<input type="checkbox"/>	FGP-MB2	5-1/4" x 5-1/4" x 4"	1.3

Product

Stackable Manifold

Project Information

Job Name:	Date Submitted:
Location:	Submitted By:
Engineer:	Approved By:
Contractor:	Manufacturer's Rep:

Installation

Must be installed in accordance with the TracPipe Design Guide and Installation Instructions and all applicable codes

Application Information

Two port manifolds with pressure test port designed for smaller systems and to facilitate additional outlets to existing manifold installations. Equipped with a 1/8" F-NPT Pressure test port.

Technical Data

Materials

Cast Iron, Gray Polyester or Epoxy coated

Pressure Ratings (used with tubing)

Specification Operating Pressure	25 PSIG
CSA International Evaluation Report - Max Operating Pressure, 3/8" through 1-1/4"	125 PSIG

Temperature Ratings (used with tubing)

Operating Temperature Range	-20 to 200 Deg F
-----------------------------	------------------



Codes

ICC Codes (IFGC, IRC, IMC, IPC), NFPA 54, UPC, CAN/CSA B149.1, NFPA 58

Standards

ANSI LC1 / CSA 6.26, ANSI Z223.1

Listings

CSA, ICC PMG 1046 / 1058, IAPMO (UPC) File No. 3682 / ES ER-0227

Dimensional Information

✓	Size	P/N	Manifold		Port Size	Run FNPT - MNPT	Weight (lbs)
			OD (Nom In.)	Length (Nom In.)			
<input type="checkbox"/>	1/2"	FGP-MI-ST-500	1-3/8"	6"	1/2"	1/2" - 1/2"	1.4
<input type="checkbox"/>	3/4"	FGP-MI-ST-750	1-3/8"	6"	1/2"	3/4" - 3/4"	1.4

Omega Flex, Inc. * 451 Creamery Way* Exton, PA 19341
Tel: 610-524-7272 * Toll Free: 800-671-8622 * Fax: 610-524-7282
www.omegaflex.com

Product

Stackable Manifold Bracket

Project Information

Job Name:	Date Submitted:
Location:	Submitted By:
Engineer:	Approved By:
Contractor:	Manufacturer's Rep:

Installation

Must be installed in accordance with the TracPipe Design Guide and Installation Instructions and all applicable codes

Application Information

Mounting bracket for use with Stackable Manifolds

Technical Data

Materials

Galvanized Steel

Pressure Ratings (used with tubing)

N/A

Temperature Ratings (used with tubing)

Operating Temperature Range -20 to 200 Deg F



Codes

Standards

Listings

Dimensional Information

✓

	P/N	L x H x W	Weight (lbs)
<input type="checkbox"/>	FGP-MB-ST	4" x 4-1/2" x 1-1/2"	0.4

Product

Load Center w/ Manifold Bracket for use with TracPipe and CounterStrike

Project Information

Job Name:	Date Submitted:
Location:	Submitted By:
Engineer:	Approved By:
Contractor:	Manufacturer's Rep:

Installation

Must be installed in accordance with the TracPipe Design Guide and Installation Instructions and all applicable codes

Application Information

For use with FGP-MI-PC Manifold and FGP-REG-3 Regulator only. Load center will mount between standard 16" O.C. Studs. Does not include piping or Regulator.

Technical Data

Materials

Powder Coated Steel

Pressure Ratings (used with tubing)

N/A

Temperature Ratings (used with tubing)

Operating Temperature Range -20 to 200 Deg F

Codes

Standards

Listings

Dimensional Information

✓	Size	P/N	L x W x D	Weight (lbs)
<input type="checkbox"/>		FGP-LC	25-1/4" x 15-3/4" x 4-1/4"	11.3



Product

Bonding Clamps

Project Information

Job Name:	Date Submitted:
Location:	Submitted By:
Engineer:	Approved By:
Contractor:	Manufacturer's Rep:

Installation

Must be installed in accordance with the TracPipe Design Guide and Installation Instructions and all applicable codes

Application Information

UL 467 Tested Bonding Clamp for use on Pipe and Brass Fitting Hex Flats.

Technical Data

Materials

Body	Brass
Screw	Stainless Steel

Pressure Ratings (used with tubing)

N/A

Temperature Ratings (used with tubing)

Operating Temperature Range -20 to 200 Deg F

Codes

NFPA 780

Standards

UL 467/CSA C22.2

Listings

UL

Dimensional Information

✓	P/N	TracPipe or CounterStrike Size	Weight (lbs)
<input type="checkbox"/>	FGP-GC-1	3/8", 1/2", 3/4"	0.2
<input type="checkbox"/>	FGP-GC-2	1", 1-1/4"	0.4
<input type="checkbox"/>	FGP-GC-3	1-1/2", 2"	1.0



Product

PS-II Adapter Assembly (Male NPT)

Project Information

Job Name:	Date Submitted:
Location:	Submitted By:
Engineer:	Approved By:
Contractor:	Manufacturer's Rep:

Installation

Must be installed in accordance with the TracPipe Design Guide and Installation Instructions and all applicable codes

Application Information

Connection of PS-II to NPT fitting.



Technical Data

Materials

Nut, Adapter, Flange and Split Rings	Yellow Brass
Insert and 1" Split Ring	Stainless Steel

Pressure Ratings (used with tubing)

Specification Operating Pressure	25 PSIG
Max Test Pressure	40 PSIG

Temperature Ratings (used with tubing)

Operating Temperature Range	-20 to 200 Deg F
-----------------------------	------------------

Codes

ICC Codes (IFGC, IRC, IMC, IPC), NFPA 54 , UPC, CAN/CSA B149.1, NFPA 58

Standards

ANSI LC1 / CSA 6.26, ANSI Z223.1

Listings

CSA, ICC PMG 1046 / 1052, IAPMO (UPC) File No. 4665

Dimensional Information

✓	Size	P/N	Diameter across flats (Nom. in.)	Fitting length (Nom. in.)	TracPipe or CounterStrike Size	Weight (lbs)
<input type="checkbox"/>	3/8"	FGP-UGF-375	1"	3-3/4"	3/8"	0.45
<input type="checkbox"/>	1/2"	FGP-UGF-500	1-1/8"	3-7/8"	1/2"	0.50
<input type="checkbox"/>	3/4"	FGP-UGF-750	1-3/8"	4-1/8"	3/4"	0.65
<input type="checkbox"/>	1"	FGP-UGF-1000	1-5/8"	4-3/4"	1"	0.90
<input type="checkbox"/>	1-1/4"	FGP-UGF-1250	2-5/8"	5-1/4"	1-1/4"	1.60
<input type="checkbox"/>	1-1/2"	FGP-UGF-1500	3"	5-7/8"	1-1/2"	2.65
<input type="checkbox"/>	2"	FGP-UGF-2000	3-1/16"	6-1/2"	2"	4.30

Product

PS-II Coupling Assembly

Project Information

Job Name:	Date Submitted:
Location:	Submitted By:
Engineer:	Approved By:
Contractor:	Manufacturer's Rep:

Installation

Must be installed in accordance with the TracPipe Design Guide and Installation Instructions and all applicable codes

Application Information

Connection of identical sizes of PS-II.

Technical Data

Materials

Nut, Adapter, Flange and Split Rings	Yellow Brass
Insert and 1" Split Ring	Stainless Steel

Pressure Ratings (used with tubing)

Specification Operating Pressure	25 PSIG
Max Test Pressure	40 PSIG

Temperature Ratings (used with tubing)

Operating Temperature Range	-20 to 200 Deg F
-----------------------------	------------------



Codes

ICC Codes (IFGC, IRC, IMC, IPC), NFPA 54, UPC, CAN/CSA B149.1, NFPA 58

Standards

ANSI LC1 / CSA 6.26, ANSI Z223.1

Listings

CSA, ICC PMG 1046 / 1052, IAPMO (UPC) File No. 4665

Dimensional Information

✓	Size	P/N	Diameter across flats (Nom. in.)	Fitting length (Nom. in.)	TracPipe or CounterStrike Size	Weight (lbs)
<input type="checkbox"/>	3/8"	FGP-UGC-375	1"	6"	3/8"	0.65
<input type="checkbox"/>	1/2"	FGP-UGC-500	1-1/8"	6-1/4"	1/2"	0.70
<input type="checkbox"/>	3/4"	FGP-UGC-750	1-3/8"	7-1/8"	3/4"	1.05
<input type="checkbox"/>	1"	FGP-UGC-1000	1-5/8"	7-5/8"	1"	1.40
<input type="checkbox"/>	1-1/4"	FGP-UGC-1250	2-5/8"	8-3/8"	1-1/4"	2.50
<input type="checkbox"/>	1-1/2"	FGP-UGC-1500	3"	10-1/8"	1-1/2"	4.25
<input type="checkbox"/>	2"	FGP-UGC-2000	3-1/16"	10-5/8"	2"	6.90

Omega Flex, Inc. * 451 Creamery Way* Exton, PA 19341
Tel: 610-524-7272 * Toll Free: 800-671-8622 * Fax: 610-524-7282

www.omegaflex.com

Product

Striker Plates

Project Information

Job Name:	Date Submitted:
Location:	Submitted By:
Engineer:	Approved By:
Contractor:	Manufacturer's Rep:

Installation

Must be installed in accordance with the TracPipe Design Guide and Installation Instructions and all applicable codes

Application Information

Protection from Potential Puncture

Technical Data

Materials

Hardened Steel RB >75

Pressure Ratings (used with tubing)

N/A

Temperature Ratings (used with tubing)

Operating Temperature Range N/A



Codes

ICC Codes (IFGC, IRC, IMC, IPC), NFPA 54 , UPC, CAN/CSA B149.1, NFPA 58, UPC

Standards

ANSI LC1 / CSA 6.26, ANSI Z223.1

Listings

CSA, ICC PMG 1046 / 1052/ 1058 IAPMO (UPC) File No.3682 / 4665 / ES ER-0227

Dimensional Information

✓

	P/N	L x W	Weight (lbs)
<input type="checkbox"/>	FGP-SP-025	1-1/2" x 3"	0.1
<input type="checkbox"/>	FGP-SP-050	6-1/2" x 3"	0.3
<input type="checkbox"/>	FGP-SP-075	8" x 3"	0.4
<input type="checkbox"/>	FGP-SP-100	11-1/2" x 3"	0.6
<input type="checkbox"/>	FGP-SP-617	17" x 6-1/2"	1.8

Product

Ball Valve - Full Flow

Project Information

Job Name:	Date Submitted:
Location:	Submitted By:
Engineer:	Approved By:
Contractor:	Manufacturer's Rep:

Installation

Must be installed in accordance with the TracPipe Design Guide and Installation Instructions and all applicable codes

Application Information

Ball valve for installation upstream of the Line Pressure Regulator in elevated pressure systems. May be used for appliance shu-off valave

Technical Data

Materials

Yellow Brass

Pressure Ratings (used with tubing)

Specification Operating Pressure	25 PSIG
Max Test Pressure	100 PSIG

Temperature Ratings (used with tubing)

Operating Temperature Range	-20 to 200 Deg F
-----------------------------	------------------



Codes

ICC Codes (IFGC, IRC, IMC, IPC), NFPA 54 /, UPC, CAN/CSA B149.1, NFPA 58, UPC

Standards

ANSI LC1 / CSA 6.26, ANSI Z22.15, ANSI Z223.1, ASME B16.33 or ASME B16.44

Listings

CSA, ICC PMG 1046 / 1052, 1058 IAPMO (UPC) File No.3682 / 4665 / ES ER-0227

Dimensional Information

✓	Size	P/N	Valve length (Nom. in.)	Weight (lbs)
<input type="checkbox"/>	1/2"	FGP-WBV-500	2-1/4"	0.5
<input type="checkbox"/>	3/4"	FGP-WBV-750	2-3/4"	0.8

Product

Quick Disconnect with Appliance Shut-Off Valve

Project Information

Job Name:	Date Submitted:
Location:	Submitted By:
Engineer:	Approved By:
Contractor:	Manufacturer's Rep:

Installation

Must be installed in accordance with the TracPipe Design Guide and Installation Instructions and all applicable codes

Application Information

For use at but not limited to outdoor BBQ and Patio Heater Locations. Indoor and outdoor use

Technical Data

Materials

Yellow Brass

Pressure Ratings (used with tubing)

Specification Operating Pressure	1/2 psig
Max Test Pressure	40 PSIG

Temperature Ratings (used with tubing)

Operating Temperature Range	-20 to 200 Deg F
-----------------------------	------------------



Codes

ICC Codes (IFGC, IRC, IMC, IPC), NFPA 54, UPC, CAN/CSA B149.1, NFPA 58, UPC

Standards


ANSI Z21.41/CSA-6.9 or ANSI Z21.90/CSA-6.24, ANSI Z223.1

Listings

CSA, ICC PMG 1046 / 1052 / 1058 IAPMO (UPC) File No. 3682 / 4665 / ES ER-0227

Dimensional Information

<input checked="" type="checkbox"/>	Size	P/N	Valve length (Nom. in.)	Weight (lbs)
<input type="checkbox"/>	1/2"	FGP-QDS	4-1/4"	0.9

Product						
90 deg. Appliance Stub Out for Use with TracPipe and CounterStrike						
Project Information						
Job Name:			Date Submitted:			
Location:			Submitted By:			
Engineer:			Approved By:			
Contractor:			Manufacturer's Rep:			
Installation						
Must be installed in accordance with the TracPipe Design Guide and Installation Instructions and all applicable codes						
Application Information						
Schedule 40 B.I.P. 90 deg. stub out for use at movable appliance locations, with mounting plate						
Technical Data						
<u>Materials</u>						
Schedule 40 B.I.P. Mounting Plate 12 Ga. Carbon Steel						
<u>Pressure Ratings (used with tubing)</u>						
Specification Operating Pressure			25 PSIG			
CSA International Evaluation Report - Max Operating Pressure, 3/8" through 1-1/4"			125 PSIG			
<u>Temperature Ratings (used with tubing)</u>						
Operating Temperature Range			-20 to 200 Deg F			
Codes						
Standards						
NPT Thread per ANSI B1.20.1						
Listings						
Dimensional Information						
✓			<i>Mounting Flange Dim (</i>	<i>Outlet length</i>	<i>TracPipe or CounterStrike</i>	
	<i>Size</i>	<i>P/N</i>	<i>Nom)</i>	<i>(Nom. in.)</i>	<i>Size</i>	<i>Weight (lbs)</i>
<input type="checkbox"/>	1/2"	FGP-ASP90S-500	5" x 5"	2-1/4"	1/2"	0.95
<input type="checkbox"/>	3/4"	FGP-ASP90S-750	5" x 5"	2-1/4"	3/4"	1.25

Omega Flex, Inc. * 451 Creamery Way* Exton, PA 19341
Tel: 610-524-7272 * Toll Free: 800-671-8622 * Fax: 610-524-7282
www.omegaflex.com

Product										
Self Bonding Silicone Tape - Black (CounterStrike) + Yellow (TracPipe yellow jacket)										
Project Information										
Job Name:				Date Submitted:						
Location:				Submitted By:						
Engineer:				Approved By:						
Contractor:				Manufacturer's Rep:						
Installation										
Must be installed in accordance with the TracPipe Design Guide and Installation Instructions and all applicable codes										
Application Information										
Apply tape in accordance with section 4.3.2 of the TracPipe Design and Installation Guide										
Technical Data										
Materials										
Silicone Rubber - No adhesives permitted										
Temperature Ratings										
Operating Temperature Range		-65 to 260 Deg F								
Codes										
Standards										
Listings										
Dimensional Information										
✓	<i>Pipe / Fitting Size</i>	<i>P/N</i>	<i>Width</i>	<i>Roll Length</i>	<i>Min. tape thickness (in.)</i>	<i>Color</i>	<i>Use with Piping</i>			
<input type="checkbox"/>	All	FGP-915-10H-12BL	1 inch	12 yds	0.020	Black	CounterStrike			
<input type="checkbox"/>	All	FGP-915-10H-12	1 inch	12 yds	0.020	Yellow	TracPipe			
<input type="checkbox"/>	All	FGP-915-20H-12PO	2 inches	12 yds	0.020	Yellow	TracPipe			

Product

AutoFlare® Steel Flange Mount for TracPipe and CounterStrike

Project Information

Job Name:	Date Submitted:
Location:	Submitted By:
Engineer:	Approved By:
Contractor:	Manufacturer's Rep:

Installation

Must be installed in accordance with the TracPipe Design Guide and Installation Instructions and all applicable codes

Mounting

Termination fitting between TracPipe or CounterStrike Tubing and NPT thread. Fitting thread is Male NPT. For use indoor, outdoor, and concealed location applications.

Technical Data

Materials

Nut, Adapter, and Split Rings	Yellow Brass
Insert and 1" Split Rings	Stainless Steel
Mounting Flange	Steel, black E-coated

Pressure Ratings (used with tubing)

Specification Operating Pressure	25 PSIG
CSA International Evaluation Report - Max Operating Pressure, 3/8" through 1-1/4"	125 PSIG

Temperature Ratings (used with tubing)

Operating Temperature Range	-20 to 200 Deg F
-----------------------------	------------------

Codes

ICC Codes (IFGC, IRC, IMC, IPC), NFPA 54, UPC, CAN/CSA B149.1, NFPA 58

Standards

ANSI LC1 / CSA 6.26, ANSI Z223.1

Listings

CSA

Dimensional Information

✓	Size	P/N	Diameter across flats (Nom. in.)	Fitting length (Nom. in.)	TracPipe or CounterStrike x M-NPT Size	Plate size l x w (in.)	Weight (lbs)
<input type="checkbox"/>	3/8"	FGP-RFG-375	15/16	2-3/8	3/8" X 3/8"	3-1/4 x 2-3/4	0.3
<input type="checkbox"/>	1/2"	FGP-RFG-500	1-1/8	2-3/4	1/2" X 1/2"	3-1/4 x 2-3/4	0.5
<input type="checkbox"/>	3/4"	FGP-RFG-750	1-3/8	2-7/8	3/4" X 3/4"	3-1/4 x 2-3/4	0.7
<input type="checkbox"/>	1"	FGP-RFG-1000	1-3/4	3-1/8	1" X 1"	3-1/4 x 2-3/4	0.9
<input type="checkbox"/>	1-1/4"	FGP-RFG-1250	2	3-1/2	1-1/4" X 1-1/4"	3-1/4 x 2-3/4	2.0



Omega Flex, Inc. * 451 Creamery Way* Exton, PA 19341

Tel: 610-524-7272 * Toll Free: 800-671-8622 * Fax: 610-524-7282

www.omegaflex.com

Product

90° AutoFlare® Steel Flange Mount for TracPipe and CounterStrike

Project Information

Job Name:	Date Submitted:
Location:	Submitted By:
Engineer:	Approved By:
Contractor:	Manufacturer's Rep:

Installation

Must be installed in accordance with the TracPipe Design Guide and Installation Instructions and all applicable codes

Mounting

Termination fitting between TracPipe or CounterStrike Tubing and NPT thread. Fitting thread is Male NPT. For use indoor, outdoor, and concealed location applications.

Technical Data

Materials

Nut, Adapter, and Split Rings	Yellow Brass
Insert and 1" Split Rings	Stainless Steel
Mounting Flange	Steel, black E-coated

Pressure Ratings (used with tubing)

Specification Operating Pressure	25 PSIG
CSA International Evaluation Report - Max Operating Pressure, 3/8" through 1-1/4"	125 PSIG

Temperature Ratings (used with tubing)

Operating Temperature Range	-20 to 200 Deg F
-----------------------------	------------------

Codes

ICC Codes (IFGC, IRC, IMC, IPC), NFPA 54, UPC, CAN/CSA B149.1, NFPA 58

Standards

ANSI LC1 / CSA 6.26, ANSI Z223.1

Listings

CSA

Dimensional Information

<input checked="" type="checkbox"/>	Size	P/N	Diameter across flats (Nom. in.)	Fitting length (Nom. in.)	TracPipe or CounterStrike x M-NPT Size	Plate size l x w (in.)	Weight (lbs)
<input type="checkbox"/>	1/2"	FGP-ELS-500	1-1/8	2-11/16	1/2" x 1/2"	3-1/4 x 2-3/4	0.6



Omega Flex, Inc. * 451 Creamery Way* Exton, PA 19341

Tel: 610-524-7272 * Toll Free: 800-671-8622 * Fax: 610-524-7282

www.omegaflex.com

Product

90° AutoFlare® Steel Flange Mount (Valve - Female NPT) Assembly for TracPipe and CounterStrike

Project Information

Job Name:	Date Submitted:
Location:	Submitted By:
Engineer:	Approved By:
Contractor:	Manufacturer's Rep:

Installation

Must be installed in accordance with the TracPipe Design Guide and Installation Instructions and all applicable codes

Mounting

Termination fitting between TracPipe or CounterStrike Tubing with appliance shut-off valve and NPT thread. Fitting thread is Female NPT. For use indoor, outdoor, and concealed location applications.



Technical Data

Materials

Nut, Adapter, and Split Rings	Yellow Brass
Insert and 1" Split Rings	Stainless Steel
Mounting Flange	Steel, black E-coated
Valve Body	Plated Brass

Pressure Ratings (used with tubing)

Specification Operating Pressure	1/2 PSIG
Max Test Pressure	60 PSIG

Temperature Ratings (used with tubing)

Operating Temperature Range	32 to 125 Deg F
-----------------------------	-----------------

Codes

ICC Codes (IFGC, IRC, IMC, IPC), NFPA 54, UPC, CAN/CSA B149.1, NFPA 58

Standards

ANSI LC1 / CSA 6.26, ANSI Z21.15, ANSI Z223.1

Listings

CSA

Dimensional Information

✓	Size	P/N	Diameter across flats (Nom. in.)	Fitting Height (Nom. in.)	TracPipe or CounterStrike x M-NPT Size	Plate size l x w (in.)	Weight (lbs)
<input type="checkbox"/>	3/8"	FGP-RF90V-375	1	3-1/2	3/8" x 1/2"	3-1/4 x 2-3/4	1.3
<input type="checkbox"/>	1/2"	FGP-RF90V-500	1-1/8	3-3/4	1/2" x 1/2"	3-1/4 x 2-3/4	1.3
<input type="checkbox"/>	3/4"	FGP-RF90V-750	1-3/8	4-9/16	3/4" x 3/4"	3-1/4 x 2-3/4	1.7

Omega Flex, Inc. * 451 Creamery Way* Exton, PA 19341

Tel: 610-524-7272 * Toll Free: 800-671-8622 * Fax: 610-524-7282

www.omegaflex.com

Product							
Floppy Galvanized Steel Conduit							
Project Information							
Job Name:				Date Submitted:			
Location:				Submitted By:			
Engineer:				Approved By:			
Contractor:				Manufacturer's Rep:			
Installation							
Must be installed in accordance with the TracPipe Design Guide and Installation Instructions and all applicable codes							
Application Information							
Provides supplemental/additional puncture protection to hardened striker plates. Applications include horizontal runs and at termination points.							
Technical Data							
Materials							
Galvanized Steel							
Pressure Ratings (used with tubing)							
N/A							
Temperature Ratings (used with tubing)							
Operating Temperature Range N/A							
Codes							
ICC Codes (IFGC, IRC, IMC, IPC), NFPA 54 , UPC, CAN/CSA B149.1, NFPA 58, UPC							
Standards							
ANSI LC1 / CSA 6.26, ANSI Z223.1, Complies with UL-1 File number E25633, Federal Specification WW-C-566C							
Listings							
CSA, ICC PMG 1046/1052/1058, IAPMO (UPC) File No.3682 / 4665 / ES ER-0227							
Dimensional Information							
✓	Fits CSST pipe size	P/N	Conduit Size	Conduit OD Max. (in.)	Rec'd Min. Drill Hole Size (in.)	Pkg. Qty.	Weight (lbs) per box or coil
<input type="checkbox"/>	3/8"	FGP-FPY-375CT	3/4"	1.105	1-1/2	50 / box	11.0
<input type="checkbox"/>	1/2"	FGP-FPY-500CT	1"	1.380	1-3/4	50 / box	15.0
<input type="checkbox"/>	3/4"	FGP-FPY-750CT	1-1/4"	1.630	2-1/8	25 / box	17.5
<input type="checkbox"/>	1"	FGP-FPY-1000CT	1-1/2"	1.950	2-1/2	25 / box	24.0
<input type="checkbox"/>	3/8"	FGP-FPY-375-50	3/4"	1.105	1-1/2	50 ft coil	9.0
<input type="checkbox"/>	1/2"	FGP-FPY-500-50	1"	1.380	1-3/4	50 ft coil	13.0
<input type="checkbox"/>	3/4"	FGP-FPY-750-25	1-1/4"	1.630	2-1/8	25 ft coil	15.5
<input type="checkbox"/>	1"	FGP-FPY-1000-25	1-1/2"	1.950	2-1/2	25 ft coil	22.0
<input type="checkbox"/>	1-1/4"	FGP-FPY-1250-25	2"	2.450	3	25 ft coil	28.5
<input type="checkbox"/>	1-1/2"	FGP-FPY-1500-25	2-1/2"	3.060	3-1/2	25 ft coil	46.0
<input type="checkbox"/>	2"	FGP-FPY-2000-25	3"	3.560	4	25 ft coil	51.0




Omega Flex, Inc. * 451 Creamery Way* Exton, PA 19341
Tel: 610-524-7272 * Toll Free: 800-671-8622 * Fax: 610-524-7282
www.omegaflex.com

Product								
Line Pressure Regulators - 2 psi Systems								
Project Information								
Job Name:				Date Submitted:				
Location:				Submitted By:				
Engineer:				Approved By:				
Contractor:				Manufacturer's Rep:				
Installation								
Must be installed in accordance with the TracPipe Design Guide and Installation Instructions and all applicable codes								
Application Information								
To reduce supply pressure from 2 psig to appliance operating pressure. Natural Gas Regulators set to 8" w.c. outlet. LP Regulators set to 11" w.c.								
Technical Data								
<u>Materials</u>								
Body - Alluminum								
Diaphragm - Nitrile Rubber								
<u>Pressure Ratings (used with tubing)</u>								
Specification Operating Pressure				2 PSIG				
Emergency Exposure Limits				65 PSIG				
<u>Temperature Ratings (used with tubing)</u>								
Operating Temperature Range				-40 to 250 Deg F				
Codes								
ICC Codes (IFGC, IRC, IMC), NFPA 54 / ANSI Z223.1, UPC, CAN/CSA B149.1, NFPA 58								
Standards								
ANSI LC1 / CSA 6.26, ANSI Z21.80								
Listings								
CSA: ANSI Z21.80 / CAN 6.22								
Dimensional Information								
✓				<i>Max</i>				
	<i>Size</i>	<i>OmegaFlex P/N</i>	<i>Max Inlet Pressure</i>	<i>Individual Load</i>	<i>**Total Capacity</i>	<i>Inlet/Outlet Thread</i>	<i>Weight (lbs)</i>	<i>Gas</i>
<input type="checkbox"/>	1/2"	FGP-REG-3	2 PSI	140 CFH	250 CFH	1/2"	0.8	Nat
<input type="checkbox"/>	1/2"	FGP-REG-3P	2 PSI	229 MBTU	368 MBTU	1/2"	0.8	Propane
<input type="checkbox"/>	3/4"	FGP-REG-5A	2 PSI	300 CFH	550 CFH	3/4"	1.9	Nat
<input type="checkbox"/>	3/4"	FGP-REG-5P	2 PSI	491 MBTU	836 MBTU	3/4"	1.9	Propane
<input type="checkbox"/>	1"	FGP-REG-7L	2 PSI	1000 CFH	1000 CFH	1"	1.25	Nat
** 1 PSI Operating Inlet Pressure								
Note: For specific regulator manufacturer's information, please contact OmegaFlex Engineering department.								



OmegaFlex, Inc. * 451 Creamery Way* Exton, PA 19341
Tel: 610-524-7272 * Toll Free: 800-671-8622 * Fax: 610-524-7282
www.omegaflex.com

Product											
Line Pressure Regulators - 5 psi Systems											
Project Information											
Job Name:				Date Submitted:							
Location:				Submitted By:							
Engineer:				Approved By:							
Contractor:				Manufacturer's Rep:							
Installation											
Must be installed in accordance with the TracPipe Design Guide and Installation Instructions and all applicable codes											
Application Information											
To reduce supply pressure from 5 psig to appliance operating pressure. 5 PSIG regulators are equipped with over-pressure protection. Natural Gas Regulators set to 8" w.c. outlet. LP Regulators set to 11" w.c.											
Technical Data											
Materials											
Body - Alluminum											
Diaphragm - Nitrile Rubber											
Pressure Ratings (used with tubing)											
Specification Operating Pressure				5 PSIG							
Emergency Exposure Limits				65 PSIG							
Temperature Ratings (used with tubing)											
Operating Temperature Range				-40 to 250 Deg F							
Codes											
ICC Codes (IFGC, IRC, IMC), NFPA 54 / ANSI Z223.1, UPC, CAN/CSA B149.1, NFPA 58											
Standards											
ANSI LC1 / CSA 6.26, ANSI Z21.80											
Listings											
CSA: ANSI Z21.80 / CAN 6.22											
Dimensional Information											
✓				<i>Max</i>							
	<i>Size</i>	<i>OmegaFlex P/N</i>	<i>Max Inlet Pressure</i>	<i>Individual Load</i>	<i>**Total Capacity</i>	<i>Inlet/Outlet Thread</i>	<i>Weight (lbs)</i>	<i>Gas</i>			
<input type="checkbox"/>	1/2"	FGP-REG-3L47	5 PSI	125 CFH	125 CFH	1/2"	1.1	Nat			
<input type="checkbox"/>	1/2"	FGP-REG-3L48	5 PSI	200 CFH	200 CFH	1/2"	1.2	Nat			
<input type="checkbox"/>	3/4"	FGP-REG-5AL48	5 PSI	320 CFH	320 CFH	3/4"	2.3	Nat			
<input type="checkbox"/>	3/4"	FGP-REG-5AL600	5 PSI	425 CFH	425 CFH	3/4"	3.4	Nat			
<input type="checkbox"/>	1"	FGP-REG-5AL601	5 PSI	465 CFH	465 CFH	1"	3.4	Nat			
** 1.5 PSI Operating Inlet Pressure											
Note: For specific regulator manufacturer's information, please contact OmegaFlex Engineering department.											

OmegaFlex, Inc. * 451 Creamery Way* Exton, PA 19341
Tel: 610-524-7272 * Toll Free: 800-671-8622 * Fax: 610-524-7282

www.omegaflex.com